



瑞銘金屬工業股份有限公司  
JUI MING METAL INDUSTRIAL CO., LTD.

# STAINLESS STEEL PIPE FITTING



瑞銘金屬工業股份有限公司  
JUI MING METAL INDUSTRIAL CO., LTD.

521 彰化縣北斗鎮四海路二段35號  
No.35, Sec. 2, Shi Hai Rd., Peitou, Changhua,  
Taiwan R.O.C

TEL: 886-4-8888396

FAX: 886-4-8888379 / 886-4-8880488

<http://www.juiming.com.tw>

E-mail: [juiming@juiming.com.tw](mailto:juiming@juiming.com.tw)

[juiming.metal@msa.hinet.net](mailto:juiming.metal@msa.hinet.net)



採一貫作業，材質生產規格按貴公司需求製造

# 公司簡介

瑞銘金屬工業股份有限公司成立於1991年9月,中國福州廠成立於1998年6月,我們有多年的專業生產製造與出口經驗,並提供高品質不銹鋼管配件。

我們的產品適用於:乳酪業、釀酒業、食品加工業、生化製藥業、半導體、飲料業、化工業...等其他工業。

主要產品: 不銹鋼管配件、蝶閥、球閥、法蘭、食品機械,生化醫療管件、管夾、接頭及各式油任 DIN、SMS、BS、3A、DS.....等管配件。

製造方式: 鍛造、鋼材、棒材、脫臘鑄造、砂模鑄造、離心鑄造、精密鑄造、鑄鋼。

資本額: 1000萬美元  
員工: 250人。



Jui Ming Metal Industrial Co., Ltd., established in September,1991 in Taiwan, and later, to extend our production, our China factory was established in June 1998 in Fu-zhou, china.

We are a professional manufacturer & exporter with many years of experience, offering high-quality stainless steel machinery parts. All of our products are according to the customers' specification of Union 3A, DIN, SMS, RJT, IDF.....The materials are available with all stainless steel- SS304, SS316, SS316L, SCS13A, SCS14A, SCS16A,1.4308,1.4408,1.4404, WCB.....etc. Customers' designs and OEM orders are welcome. We always act promptly in responding to customers' needs and inquiries.

Our products are widely used in dairy, brewery, food processing, pharmaceutical, biotechnology, semiconductor, beverage, chemical, water treatment and many other industries.

Major products:  
Stainless Steel Sanitary Fitting, Butterfly Valve, Ball Valve, Flange, Ball, Piping, BPE pipe and many other Union, parts.....etc.

Manufacture methods:  
Forged, Steel, Rod, Waxiness coating, Investment casting, Sand casting, Cast steel, Process finished product.

JUI MING-PED, BV, EC and DNV ISO 9001 EN10204 3.1 are your assurance of outstanding quality & service.

Capital: US\$ 10,000,000  
Employee: 250 persons



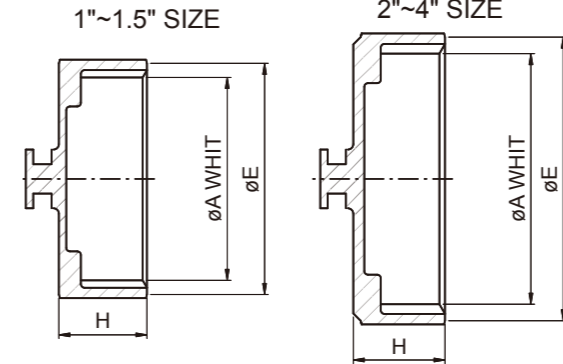


# RJT UNION (BS4825 PART 5)



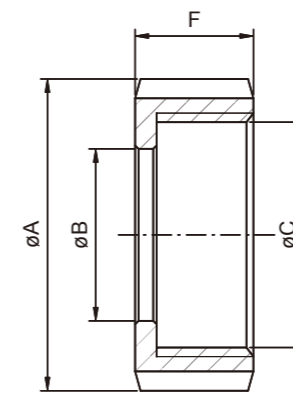
- Standards: BS 4825 Part 5.
- Applications: For the Food, Beverage, and other Hygiene Industry
- Working Pressures: 10 Bar (Max. operating)
- Materials: Round slotted Nut-----TP-304  
Hex. Nut-----TP-304  
Expanding Liner-----TP-304, 316, 316L  
Expanding Male part-----TP-304, 316, 316L  
Welding Liner-----TP-304, 316, 316L  
Welding Male part-----TP-304, 316, 316L  
Blank Round Nut-----TP-304, 316, 316L  
Blank Hex. Nut-----TP-304, 316, 316L  
Blank Liner-----TP-304, 316, 316L  
Seal----EPDM, Silicone, Buna-N, Viton.
- Surface Finished: Ra Max 0.8um.
- Size range: 1"-----8"

## RJT UNION



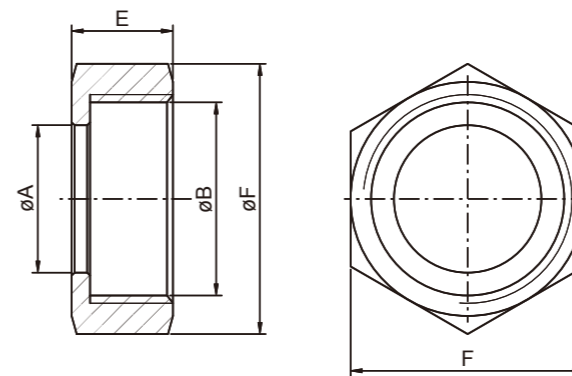
**RJT-13AH 六角盲螺帽**  
RJT BLANK HEXAGONAL NUT

SIZE	A	E	H
1"	42.6*1/8	49.0	24.0
1 1/2"	55.3*1/8	63.0	24.0
2"	68.3*1/6	77.3	25.0
2 1/2"	80.9*1/6	90.0	26.0
3"	93.6*1/6	102.7	26.0
4"	119.1*1/6	128.0	25.0
6"	169.6*1/6	182.0	29.0



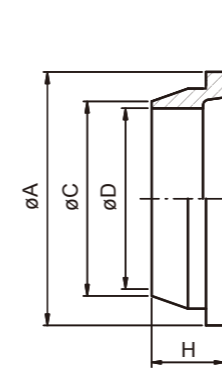
**RJT-13R 圓螺帽**  
RJT ROUND NUT

SIZE	A	B	C	F
1"	58.5	33.3	42.6*1/8	22.2
1 1/2"	74	46	55.3*1/8	22.2
2"	85.5	58.7	68.3*1/6	22.2
2 1/2"	98.5	71.4	80.9*1/6	22.2
3"	111.6	84.1	93.6*1/6	22.2
4"	138	109.5	119.1*1/6	22.2
5"	172.5	136	144.1*1/6	24
6"	197	162.6	169.6*1/6	23.5



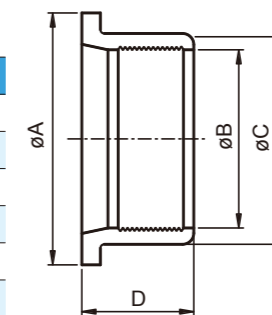
**RJT-13H 六角螺帽**  
RJT HEX. NUT

SIZE	A	B	E	F
1"	33.3	42.6*8T	22.2	50.8
1 1/2"	46	55.3*8T	22.2	65
2"	58.7	68.3*8T	22.2	79.3
2 1/2"	71.4	80.9*8T	22.2	92
3"	84.1	93.6*8T	22.2	104.7
4"	109.5	119.1*8T	22.2	130
6"	162.6	169.6*8T	23.8	184



**RJT-14 無牙接頭**  
RJT WELD LINER

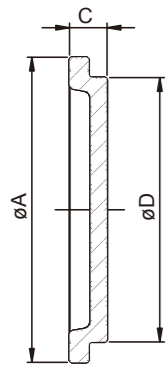
SIZE	A	C	D	H
1"	41.3	25.65	22.2	19.5
1 1/2"	54.0	38.35	34.9	19.5
2"	66.7	51.05	47.6	19.5
2 1/2"	79.4	63.75	60.3	19.5
3"	92.1	76.45	73.0	19.5
4"	117.5	101.85	97.6	19.5
6"	169.1	152.5	148	19.5



**RJT-14R 擴管平接頭**  
RJT EXPANDING LINER

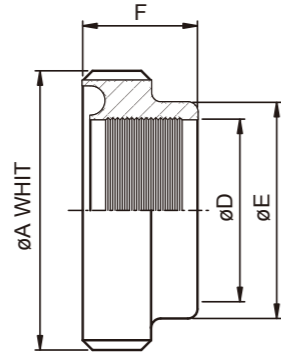
SIZE	A	B	C	D
1"	41.3	25.5	32.5	20
1 1/2"	54	38.2	45.2	24
2"	66.7	50.9	57.9	28
2 1/2"	79.4	63.6	70.6	32
3"	92.1	76.3	83.3	32
4"	117.5	101.7	108.7	32

# RJT UNION FITTINGS (BS4825 PART 5)



**RJT-14AH** 盲板接頭  
RJT BLANK CAP

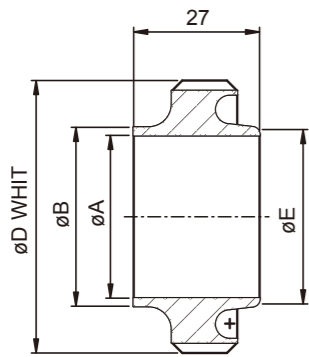
SIZE	A	D	C
1"	41.3	32.4	8.2
1 1/2"	54	45.1	8.2
2"	66.7	57.8	8.2
2 1/2"	79.4	70.5	8.2
3"	92.1	83.1	8.2
4"	117.5	108.6	8.2
6"	169	159.6	10.2



**RJT-15R** 擴管牙接頭  
RJT EXPANDING MALE

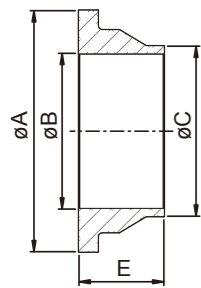
SIZE	A	D	E	F
1"	45.7*8T	25.5	32.5	20
1 1/2"	58.4*8T	38.2	45.2	24
2"	72.7*6T	50.9	57.9	28
2 1/2"	85.4*6T	63.6	70.6	32
3"	98.1*6T	76.3	83.3	32
4"	123.8*6T	101.7	108.7	32

**RJT-15** 有牙接頭  
RJT WELD MALE



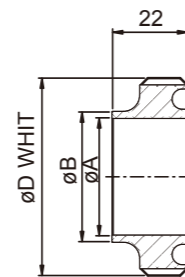
SIZE	A	B	D	E
1"	22.2	25.65	45.72*8T	25.4
1 1/2"	34.9	38.35	58.42*8T	38.1
2"	47.6	51.05	72.72*6T	50.8
2 1/2"	60.3	63.75	85.42*6T	63.5
3"	73.0	76.45	98.12*6T	76.2
4"	97.6	101.85	123.52*6T	101.6
8"	198.8	203.2	224.3*6T	203.3
104	100	104	123.52*6T	101.6

**14CIP** CIP無牙接頭  
FLAT FACE LINER



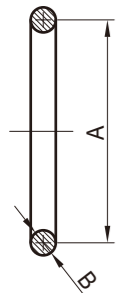
SIZE	A	B	C	E
1"	41.3	22.2	25.4	19.0
1 1/2"	54.0	34.9	38.1	19.0
2"	66.7	47.6	50.8	19.0
2 1/2"	79.4	60.3	63.5	19.0
3"	92.1	73.0	76.2	19.0
4"	117.5	97.6	101.6	19.0
6"	168.3	148.2	152.4	23.5

**15CIP** CIP有牙接頭  
FLAT FACE MALE



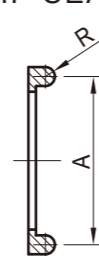
SIZE	A	B	D
1"	22.2	25.4	45.72*8T
1 1/2"	34.9	38.1	58.42*8T
2"	47.6	50.8	72.72*6T
2 1/2"	60.3	63.5	85.42*6T
3"	73.0	76.2	98.12*6T
4"	97.6	101.6	123.52*6T
6"	148.2	152.4	174.32*6T

**RJT** 墊片  
RJT SEAL O-RING

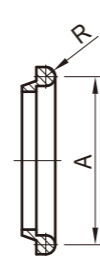


SIZE	A	B
1"	33.3	6.6
1 1/2"	54.0	6.6
2"	66.7	6.6
2 1/2"	79.4	6.6
3"	92.1	6.6
4"	117.5	6.6
6"	168.3	6.6

CIP墊片  
CIP SEAL



RJT SEAL U-TYPE



SIZE	A	B
1"	33.3	3.2
1 1/2"	54.0	3.2
2"	66.7	3.2
2 1/2"	79.4	3.2
3"	92.1	3.2
4"	117.5	3.2
6"	168.3	3.2

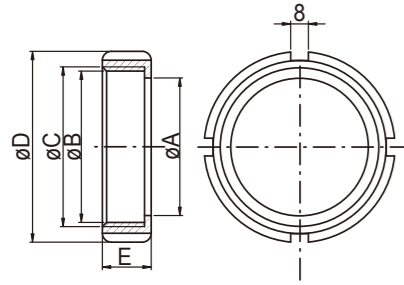
# DANSK UNION FITTINGS



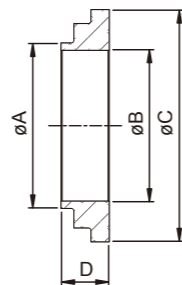
- Standards: DS 722.
- Applications: For the Food, Beverage, and other Hygiene Industry
- Working Pressures: 10 Bar (Max. operating)
- Materials:
  - Round slotted Nut-----TP-304
  - Expanding Liner-----TP-304, 316, 316L
  - Expanding Male part-----TP-304, 316, 316L
  - Welding Liner-----TP-304, 316, 316L
  - Welding Male part-----TP-304, 316, 316L
  - Blank Round Nut-----TP-304, 316, 316L
  - Blank Liner-----TP-304, 316, 316L
  - Seal -----EPDM, Silicone, Buna-N, Viton.
- Surface Finished: Ra Max 0.8um.
- Size range: 1"----- 6"

# DANSK UNION FITTINGS

**DS-13R 圓螺帽**  
DANSK ROUND NUT



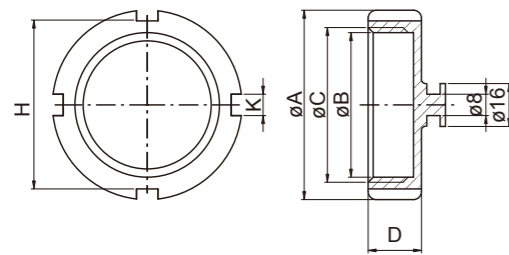
SIZE	A	B	C	D	E
1"	35.0	40.2	RD44*1/6	57.0	20
1 1/4"	42.3	48.2	RD52*1/6	65.0	20
1 1/2"	48.5	54.2	RD58*1/6	71.0	20
2"	62.5	68.2	RD72*1/6	86.0	22
2 1/2"	76.5	84.2	RD88*1/6	103.0	24
3"	88.5	96.2	RD100*1/6	115.0	25
4"	117.0	126.5	RD130*1/6	150.0	28
4"-4RT	116.0	125.0	RD130*1/4	148.0	31
5"	140.0	154.7	RD160*1/4	178.0	32
6"	161.0	169.8	RD175*1/4	193.0	32



**DS-14 無牙接頭**  
DANSK WELD LINER

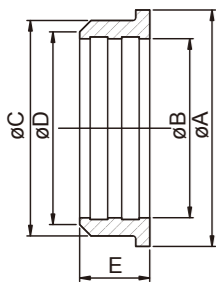
SIZE	A	B	C	D
1"	25.4	22.5	40	11
1 1/4"	33.4	27.8	47.4	11
1 1/2"	38.4	35.5	54	11
2"	51.4	48.5	68	11
2 1/2"	63.9	60.5	84	12
3"	76.4	72	96	12
4"	102	97.6	124	12
4"-4RT	102	97.5	123	30
5"	132	123.0	153.5	30
6"	155.4	148.0	168.0	24

**DS-13AH 盲螺帽**  
DANSK BLANK NUT

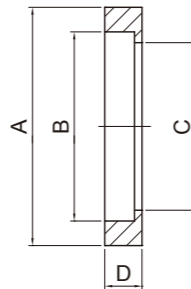


SIZE	A	B	C	D	H	K
1"	57	40.2	RD44*1/6	20	49	8
1 1/2"	71	54.2	RD58*1/6	20	63	8
2"	86	68.2	RD72*1/6	22	78	8
2 1/2"	103	84.2	RD88*1/6	24	98	8
3"	115	96.2	RD100*1/6	25	107	8
4"	150	126.2	RD130*1/6	28	139	10

**DS-14R 擴管平接頭**  
DANSK WELD LINER



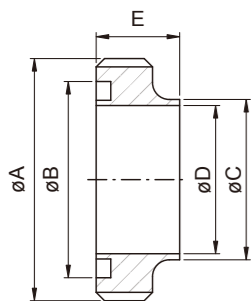
SIZE	A	B	C	D	E
1"	40.0	25.5	33.8	29.0	16.0
1 1/4"	48.0	31.8	41.5	36.0	16.0
1 1/2"	54.0	38.2	47.5	42.0	18.0
2"	68.0	50.9	61.5	55.0	20.0
2 1/2"	84.0	63.7	75.5	67.5	22.0
3"	96.0	76.4	87.5	80.0	24.0
4"	124.0	101.8	115.0	109.0	30.0



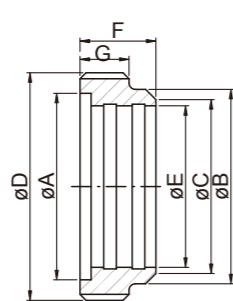
**DS 墊片**  
SEAL FOR DANSK UNION

SIZE	A	B	C	D
1"	32.0	22.5	25.4	5.0
1 1/4"	41.0	29.0	31.8	5.0
1 1/2"	47.0	35.0	38.1	5.0
2"	59.0	47.5	50.8	5.0
2 1/2"	74.5	60.0	63.5	5.0
3"	88.0	72.5	76.2	5.0
4"	116.0	97.5	101.6	5.0

**DS-15 有牙接頭**  
DANSK WELD MALE



SIZE	A	B	D	C	E
1"	RD44*1/6	32	22.5	25.4	18.5
1 1/4"	RD52*1/6	41	27.8	33.4	20
1 1/2"	RD58*1/6	47	35.5	38.4	20
2"	RD72*1/6	59	48.5	51.4	20
2 1/2"	RD88*1/6	74.5	60.5	63.9	24
3"	RD100*1/6	88	72	76.4	24
4"	RD130*1/6	112.5	97.6	102	24
4"-4RT	RD130*1/4	116.0	97.5	101.6	34
5"	RD160*1/4	139.0	123.0	135.0	36
6"	RD175*1/4	164.0	148.0	160.0	37



**DS-15R 擴管牙接頭**  
DANSK EXPAND MALE

SIZE	A	B	C	D	E	F	G
1"	32.0	34.0	29.0	RD44*1/6	25.5	20.0	13.5
1 1/4"	41.0	41.5	36.0	RD52*1/6	31.8	20.0	13.5
1 1/2"	47.0	47.5	42.0	RD58*1/6	38.2	22.0	13.5
2"	59.0	61.5	55.0	RD72*1/6	50.9	24.0	15.5
2 1/2"	74.5	75.5	67.5	RD88*1/6	63.7	26.0	15.5
3"	88.0	87.5	80.0	RD100*1/6	76.4	28.0	16.5
4"	112.5	115.0	110.0	RD130*1/6	101.8	35.0	18.0

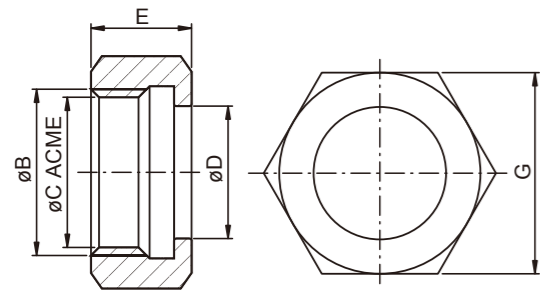
# 3A BEVEL SEAT UNION FITTINGS



- Standards: 3A STD.
- Applications: For the Food, Beverage, and other Hygiene Industry
- Working Pressures: Up to 400PSI.
- Materials:
  - Hex. Nut-----TP-304
  - Expanding Liner-----TP-304, 316, 316L
  - Expanding Male part-----TP-304, 316, 316L
  - Welding Liner-----TP-304, 316, 316L
  - Welding Male part-----TP-304, 316, 316L
  - Blank Hex. Nut-----TP-304, 316, 316L
  - Blank Liner-----TP-304, 316, 316L
- Surface Finished: ID & OD 150 Grit or equivalent 32RA.
- Size range: 1"-----4"
- Screw: Acme

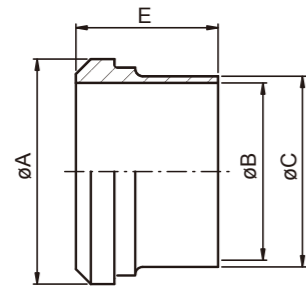


# 3A BEVEL SEAT UNION FITTINGS



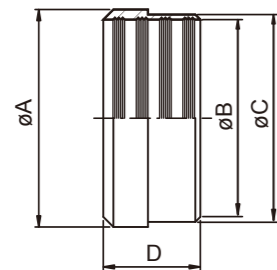
**3A-13H 六角螺帽**  
3A HEXAGONAL NUT

SIZE	B	C	D	E	G
1"	38.02	34.34*1/8	30.3	23.0	46.0
1 1/2"	51.54	47.86*1/8	43.4	24.6	61.1
2"	65.05	61.37*1/8	56.5	27.0	76.2
2 1/2"	78.56	74.88*1/8	69.6	30.15	91.3
3"	92.08	88.40*1/8	82.7	32.5	106.4
4"	120.14	115.42*1/6	108.9	38.1	137.6



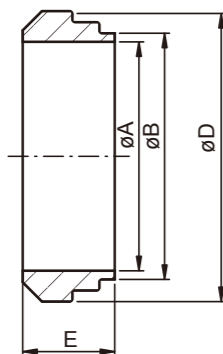
**3A-14A 長型平接頭**  
LONG WELD LINER

SIZE	A	B	C	E
1"	33.3	22.2	25.7	34.9
1 1/2"	46.8	34.9	38.4	38.1
2"	60.3	47.5	51.1	38.1
2 1/2"	73.8	60.2	63.8	44.5
3"	87.3	72.9	76.5	44.5
4"	114.3	97.4	101.9	44.5



**3A-14R 擴管平接頭**  
RECESSLESS LINER

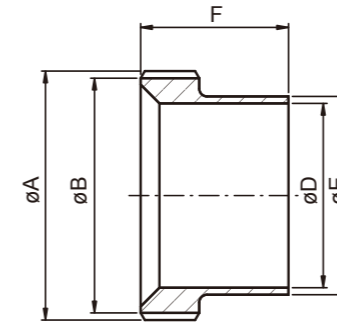
SIZE	A	B	C	D
1"	33.3	25.5	29.5	19.1
1 1/2"	46.8	38.2	42.6	28.6
2"	60.3	50.9	55.7	33.3
2 1/2"	73.8	63.6	68.8	34.9
3"	87.3	76.3	81.9	36.5
4"	114.3	101.7	108.1	38.1



**3A-14PRF 短型平接頭**  
3A SHORT BEVEL SEAT WELD LINER

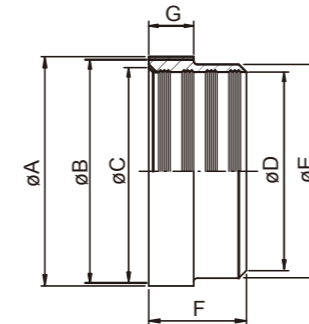
SIZE	A	B	D	E
1"	22.2	25.7	33.3	18.3
1 1/2"	34.9	38.4	46.8	18.3
2"	47.5	51.1	60.3	19.1
2 1/2"	60.2	63.8	73.8	22.3
3"	72.9	76.5	87.3	23.1
4"	97.4	101.9	114.3	26.2

# 3A BEVEL SEAT UNION FITTINGS



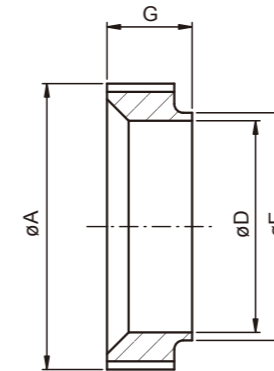
**3A-15A 長型牙接頭**  
LONG WELD MALE

SIZE	A	B	D	E	F
1"	37.13ACME 8TPI	33.4	22.2	25.7	34.9
1 1/2"	50.65ACME 8TPI	47.0	34.9	38.4	38.1
2"	64.16ACME 8TPI	60.5	47.5	51.1	38.1
2 1/2"	77.67ACME 8TPI	74.0	60.2	63.8	44.5
3"	91.19ACME 8TPI	87.5	72.9	76.5	44.5
4"	119.25ACME 6TPI	114.5	97.4	101.9	44.5



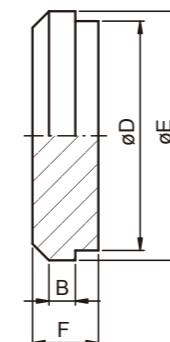
**3A-15R 擴管牙接頭**  
RECESSLESS MALE

SIZE	A	B	C	D	E	F	G
1"	37.13	33.45	30.2	25.5	29.5	20.6	16.5
1 1/2"	50.65	46.96	43.7	38.2	42.6	28.6	16.5
2"	64.17	60.48	57.2	50.9	55.7	34.9	17.1
2 1/2"	77.67	73.99	70.7	63.6	68.8	38.1	18.3
3"	91.19	87.5	84.2	76.3	81.9	41.3	19.1
4"	119.25	114.53	109.4	101.7	108.1	41.3	22.2



**3A-15 TRF 短型牙接頭**  
3A SHORT BEVEL SEAT WELD MALE

SIZE	A	D	E	G
1"	37.13+0-0.46	22.2	25.7	18.3
1 1/2"	50.65+0-0.48	34.9	38.4	18.3
2"	64.17+0-0.51	47.5	51.1	19.1
2 1/2"	77.67+0-0.53	60.2	63.8	22.2
3"	91.19+0-0.56	72.9	76.5	23.1
4"	119.25+0-0.64	97.4	101.9	26.2



**3A-16A 盲蓋**  
BLANK CAP

SIZE	B	D	E	F
1"	4.8	29.5	33.4	12.6
1.5"	4.7	42.6	46.9	14.3
2"	6.4	55.7	60.5	16.0
2.5"	7.1	69.0	73.9	18.2
3"	7.1	81.9	87.5	18.2
4"	7.9	108.0	114.5	20.6



# SMS UNION FITTINGS



Jui Ming Metal Industrial Co., Ltd.

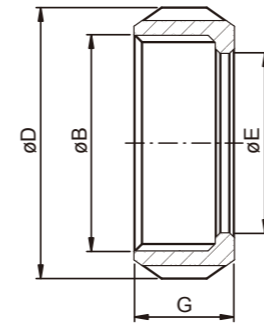


- Standards: SMS 1145.
- Applications: For the Food, Beverage, and other Hygiene Industry
- Working Pressures: Normal operating at pressures up to 6 Bar.
- Materials:
  - Round slotted Nut-----TP-304
  - Expanding Liner-----TP-304, 316, 316L
  - Expanding Male part-----TP-304, 316, 316L
  - Welding Liner-----TP-304, 316, 316L
  - Welding Male part-----TP-304, 316, 316L
  - Blank Round Nut-----TP-304, 316, 316L
  - Blank Liner-----TP-304, 316, 316L
  - Seal----EPDM, Silicone, Buna-N, Viton.
- Surface Finished: Ra Max 0.8um.
- Size range: Metric 25-104. Imperial 1"-----4"

## SMS UNION FITTINGS

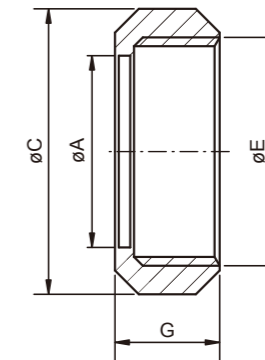


### SMS-13RW 長型圓螺帽 SMS ROUND SLOTTED NUT-W



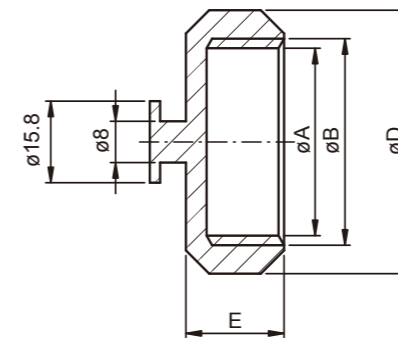
SIZE	B	D	E	G
1"	RD40*1/6	51	32.3	20
1 1/4"	RD48*1/6	60	40.0	22
1 1/2"	RD60*1/6	74	48.5	25
2"	RD70*1/6	84	61.0	26
2 1/2"	RD85*1/6	100	74.0	30
3"	RD98*1/6	114	87.0	32
4"	RD132*1/6	154	117	45

### SMS-13R 圓螺帽 SMS ROUND SLOTTED NUT



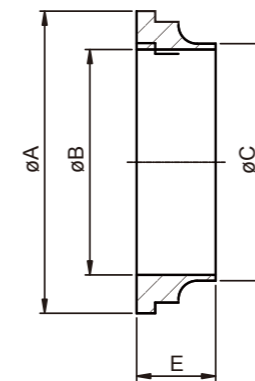
SIZE	A	C	E	G
1"	32.5	51	RD40*1/6	19
1 1/4"	40.3	60	RD48*1/6	22
1 1/2"	48.5	74	RD60*1/6	23
2"	61	84	RD70*1/6	24
2 1/2"	74	100	RD85*1/6	28
3"	87	114	RD98*1/6	30
4"	113	138	RD125*1/4	31

### SMS-13AH 盲螺帽 SMS BLANK NUT



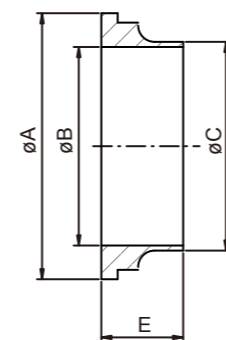
SIZE	A	B	D	E
1"	36.3	RD40*1/6	51	19
1 1/2"	56.3	RD60*1/6	74	23
2"	66.3	RD70*1/6	84	24
2 1/2"	81.3	RD85*1/6	100	28
3"	94.3	RD98*1/6	114	30
4"	120	RD125*1/4	138	31

### SMS-14 無牙接頭 SMS WELD LINER



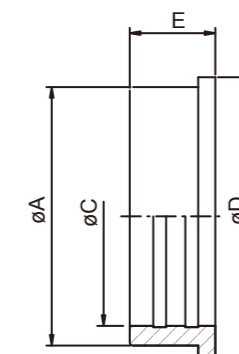
SIZE	A	B	C	E
1"	35.5	22.5	25	15.5
1 1/4"	43.3	29.3	32	16
1 1/2"	55	35.5	38	16
2"	65	48.5	51	17
2 1/2"	80	60.5	63.5	17
3"	93	72.9	76.1	19
4"	118	100.0	104	19
101.6	118	97.6	101.6	19

### SMS-14G 長型平接頭 SMS LONG WELD LINER-G



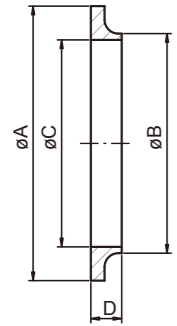
SIZE	A	B	C	E
1"	35.5	22.5	25	15.5
1 1/2"	55	35.5	38	20
2"	65	48.5	51	20
2 1/2"	80	60.5	63.5	24
3"	93	72.8	76.1	24
4"	118	100	104	30
101.6	118	97.6	101.6	30

### SMS-14R 擴管平接頭 SMS EXPANDING LINER



SIZE	A	C	D	E
1"	32	25.2	35.5	17
1 1/4"	39.5	32.1	43.5	17
1 1/2"	48	38.2	55	20
2"	60.4	51.2	65	20
2 1/2"	73.5	63.7	80	25
3"	86.5	76.2	93	30
4"	112.5	101.8	118	27

# SMS UNION FITTINGS



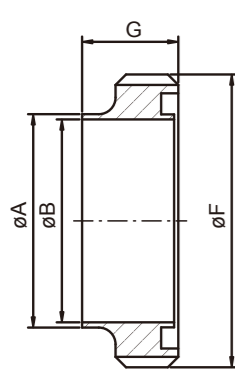
**SMS-14W** 短型無牙接頭  
SMS WELD LINER-W

SIZE	A	B	C	D
1"	35.5	25.0	22.6	7.5
1 1/4"	43.5	32.0	29.6	8.0
1 1/2"	55.0	38.0	35.6	9.0
2"	65.0	51.0	48.6	9.0
2 1/2"	80.0	63.5	60.3	9.0
3"	93.0	76.1	72.9	10.0
4"	127.0	101.6	97.6	12.0



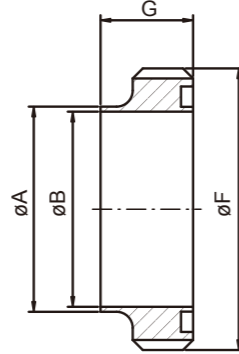
**SMS14-AH** 無牙盲板  
SMS BLANK LINER

SIZE	A	B	C
1"	32	35.5	7.5
1 1/2"	47.9	55	8
2"	60.4	65	9
2 1/2"	73.5	80	9
3"	86.5	93	11
4"	112.5	118	11



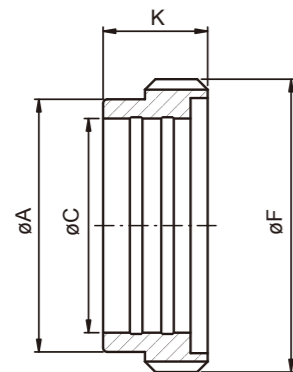
**SMS-15** 有牙接頭  
SMS WELD MALE

SIZE	A	B	F	G
1"	25	22.5	RD40*1/6	19
1 1/4"	32	29.3	RD48*1/6	20
1 1/2"	38	35.5	RD60*1/6	23
2"	51	48.5	RD70*1/6	23
2 1/2"	63.5	60.5	RD85*1/6	27
3"	76.1	72.9	RD98*1/6	27
4"	104	100	RD125*1/4	30
101.6	101.6	97.6	RD125*1/4	30



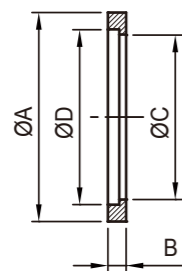
**SMS-15W** 短型有牙接頭  
SMS WELD MALE-W

SIZE	A	B	F	G
25	25.0	22.6	RD40*1/6	15
32	32.0	29.6	RD48*1/6	17
38	38.0	35.6	RD60*1/6	20
51	51.0	48.6	RD70*1/6	20
63	63.5	60.3	RD85*1/6	24
76	76.1	72.9	RD98*1/6	24
104	101.6	97.6	RD132*1/6	35



**SMS-15R** 擴管牙接頭  
SMS EXPANDING MALE

SIZE	A	C	F	K
1"	32	25.2	RD40*1/6	20
1 1/2"	47.9	38.2	RD60*1/6	23
2"	60.4	51.2	RD70*1/6	25
2 1/2"	73.5	63.7	RD85*1/6	30
3"	86.5	76.2	RD98*1/6	30
4"	112.5	101.8	RD125*1/4	30



**SMS** 墊片  
SMS SEAL RING

SIZE	$\phi A$	B	$\phi C$	$\phi D$
25	31.8	5.3	22.8	25.1
38	47.8	5.3	35.8	38.1
51	60.8	5.3	48.8	51.1
63.5	73.3	5.3	61.0	63.6
76	85.8	5.3	73.4	76.1
104	115.7	5.3	100.5	104.0

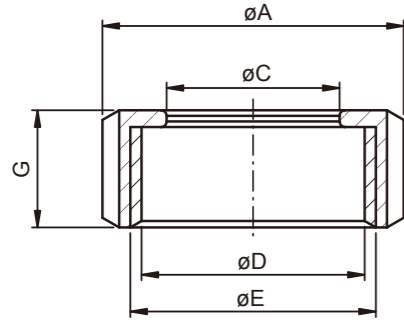
# DIN UNION FITTINGS



- Standards: DIN 11851
- Applications: For Food Industry
- Working Pressures: DN10-DN40 40Bar , DN50-DN100 25Bar
- Materials:
  - Round slotted Nut-----TP-304
  - Expanding Liner-----TP-304, 316, 316L
  - Expanding Male part-----TP-304, 316, 316L
  - Welding Liner-----TP-304, 316, 316L
  - Welding Male part-----TP-304, 316, 316L
  - Blank Nut-----TP-304, 316, 316L
  - Blank Liner-----TP-304, 316, 316L
  - Seal---EPDM, Silicone, Buna-N, Viton.
- Surface Finished: Ra Max 0.8um.
- Size range: Imperial 1"-----4"  
Metric DN10---DN150

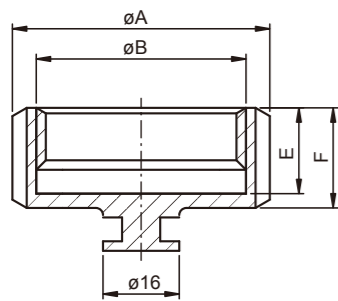


## DIN-13R 圓螺帽 DIN ROUND SLOTTED NUT

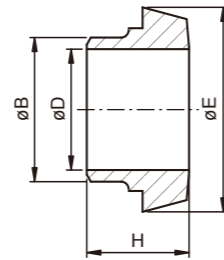


DIN	A	C	D	E	G	SLOT
10	38	19	25.2	RD 28*1/8	18	4
15	44	25	31.2	RD 34*1/8	18	4
20	54	31	40.3	RD 44*1/6	21	4
25	63	36	48.3	RD 52*1/6	21	4
32	70	42	54.3	RD 58*1/6	21	4
40	78	49	61.3	RD 65*1/6	21	4
50	92	62	74.3	RD 78*1/6	22	4
65	112	80	91.3	RD 95*1/6	25	4 6
80	127	94	105	RD110*1/4	30	4 6
90	138	104	115	RD120*1/4	30	4 6
100	148	115	125	RD130*1/4	31	4 6
125	178	138	155	RD160*1/4	35	4 6
150	210	164	185	RD190*1/4	40	4 6

## DIN-13AH 盲螺帽 DIN BLANK NUT



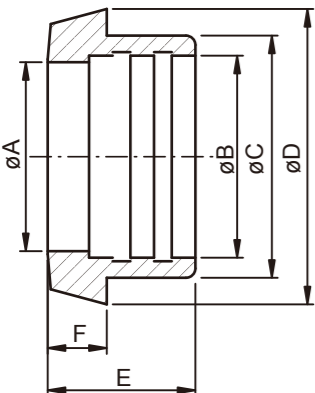
DIN	A	B	E	F	SLOT
10	38	RD 28*1/8	15	18	4
15	44	RD 34*1/8	15	18	4
20	54	RD 44*1/6	18	21	4
25	63	RD 52*1/6	18	21	4
32	70	RD 58*1/6	18	21	4
40	78	RD 65*1/6	18	21	4
50	92	RD 78*1/6	19	22	4
65	112	RD 95*1/6	21	25	4 6
80	127	RD1 10*1/4	26	30	4 6
90	138	RD120*1/4	26	30	4 6
100	148	RD130*1/4	26	31	4 6
125	178	RD160*1/4	30	35	4 6
150	210	RD190*1/4	34	40	4 6



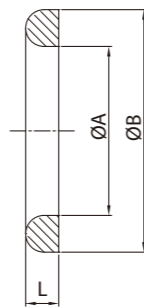
## DIN-14 無牙接頭 DIN WELD LINER

DN	B	D	E	H
10	15	10	22	17
15	21	16	28	17
20	25	20	36	18
25	31	26	44	22
32	37	32	50	25
40	43	38	56	26
50	55	50	68	28
65	72	66	86	32
80	87	81	100	37
90	95	89	111	35
100	106	100	120	44
125	132	125	149	34
150	157	150	175	37

## DIN-14R 擴管平接頭 DIN EXPANDING LINER



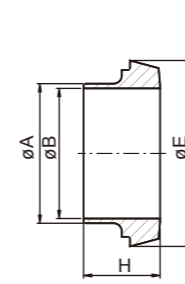
DIN	A	B	C	D	E	F
10	10	12.2	18	22	17	6
15	16	18.2	24	28	17	6
20	20	22.2	30	36	18	8
25	26	28.2	35	44	22	10
32	32	34.2	41	50	25	10
40	38	40.2	48	56	26	10
50	50	52.2	61	68	28	11
65	66	70.3	79	86	32	12
80	81	85.3	93	100	37	12
100	100	104.3	114	120	44	15
125	125	129.3	137	149	34	17
150	150	154.3	163	175	37	18



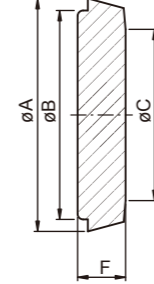
## DIN 墊片 DIN SEAL RING

SIZE	øA	øB	L
10	12	20	4.5
15	18	26	4.5
20	23	33	4.5
25	30	40	5
32	36	46	5
40	42	52	5
50	54	64	5
65	71	81	5
80	85	95	5
100	104	114	5
125	130	142	7
150	155	167	7

## DIN-14EB 英制無牙接頭 DIN IMPERIAL WELD LINER

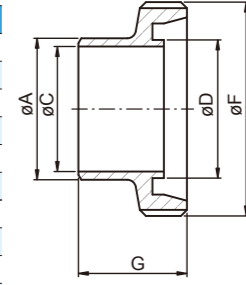


SIZE	A	B	E	H
1/2"	12.7	9.4	22	17
3/4"	19.05	15.8	28	17
1"	25.4	22.2	44	22
1 1/4"	31.8	28.5	50	25
1 1/2"	38.1	34.9	56	26
2"	50.8	47.6	68	28
2 1/2"	63.5	60.3	86	32
3"	76.2	73.0	100	37
4"	101.6	97.6	121	44
5"	127.0	123.0	150	34
6"	152.4	148.4	176	37



## DIN-14AH 盲板 DIN BLANK LINER

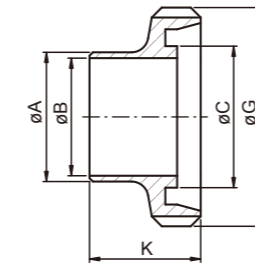
DIN	A	B	C	F
10	22	18	11	9
15	28	24	17	9
20	36	30	21	11
25	44	35	27	13
32	50	41	33	13
40	56	48	39	13
50	68	61	51	14
65	86	79	67	16
80	100	93	82	16
100	120	114	101	20
125	149	137	126	22
150	175	163	151	24



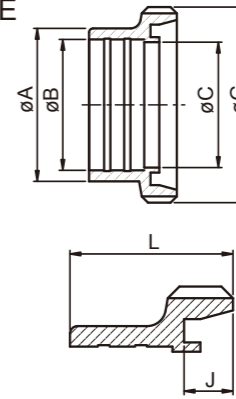
## DIN-15 有牙接頭 DIN WELD MALE

SIZE	A	C	D	F	G
10	15	10	12	RD28*1/8	21
15	21	16	18	RD34*1/8	21
20	25	20	23	RD44*1/6	24
25	31	26	30	RD52*1/6	29
32	37	32	36	RD58*1/6	32
40	43	38	42	RD65*1/6	33
50	55	50	54	RD78*1/6	35
65	72	66	71	RD95*1/6	40
80	87	81	85	RD110*1/4	45
90	95	89	94	RD120*1/4	45
100	106	100	104	RD130*1/4	54
125	132	125	130	RD160*1/4	46
150	157	150	155	RD190*1/4	50

## DIN-15EB 英制有牙接頭 DIN IMPERIAL WELD MALE



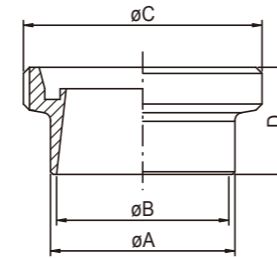
SIZE	A	B	C	G	K
1/2"	12.7	9.4	12.0	RD28*1/8	14
3/4"	19.05	15.8	18.0	RD34*1/8	14
1"	25.4	22.2	30	RD51.9*1/6	29
1 1/4"	31.8	28.5	36	RD57.9*1/6	32
1 1/2"	38.1	34.9	42	RD64.9*1/6	33
2"	50.8	47.6	54	RD77.9*1/6	35
2 1/2"	63.5	60.3	71	RD94.9*1/6	40
3"	76.2	73.0	86	RD109.9*1/4	45
4"	101.6	97.6	105	RD129.9*1/4	54
5"	127.0	123.0	130	RD159.9*1/4	46
6"	152.4	148.4	155	RD189.9*1/4	50



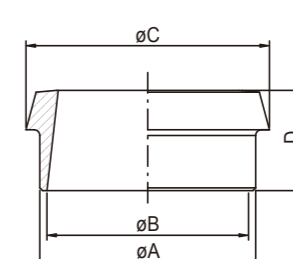
## DIN-15R 擴管有牙接頭 DIN EXPANDING MALE

DIN	A	B	C	G	J	L
10	18	12.2	10	27.5 RD28*1/8	7	21
15	24	18.2	16	33.5 RD34*1/8	7	21
20	30	22.2	20	43.3 RD44*1/6	9	24
25	35	28.2	26	51.3 RD52*1/6	10.5	29
32	41	34.2	32	57.3 RD58*1/6	10.5	32
40	48	40.2	38	64.3 RD65*1/6	10.5	33
50	61	52.2	50	77.3 RD78*1/6	10.5	35
65	79	70.3	66	94.3 RD95*1/6	11.5	40
80	93	85.3	81	109 RD110*1/4	11.5	45
100	114	104.3	100	129 RD130*1/4	13.5	54
125	137	129.3	125	159 RD160*1/4	16.5	46
150	163	154.3	150	189 RD190*1/4	17.5	50

## DIN/ISO MALE ISO-15 內斜有牙接頭



DN	A	B	C	D
10	18	14	RD28*1/8	21
15	21.3	18.1	RD34*1/8	21
20	26.9	23.7	RD44*1/6	24
25	33.7	29.7	RD52*1/6	29
32	42.4	38.4	RD58*1/6	32
40	48.3	44.3	RD65*1/6	33
50	60.3	56.3	RD78*1/6	35
65	76.1	71.6	RD95*1/6	40
80	88.9	84.3	RD110*1/4	45
100	114.3	109.1	RD130*1/4	54



## DIN/ISO LINER ISO-14 內斜無牙接頭

DN	A	B	C	D
10	18	14	22.5	17
15	21.3	18.1	28.5	17
20	26.9	23.7	36.5	18
25	33.7	29.7	44	22
32	42.4	38.4	50	25
40	48.3	44.3	56	26
50	60.3	56.3	68.5	28
65	76.1	71.6	86	32
80	88.9	84.3	100	37
100	114.3	109.1	121	44



Jui Ming Metal Industrial Co., Ltd.

# IDF UNION FITTINGS

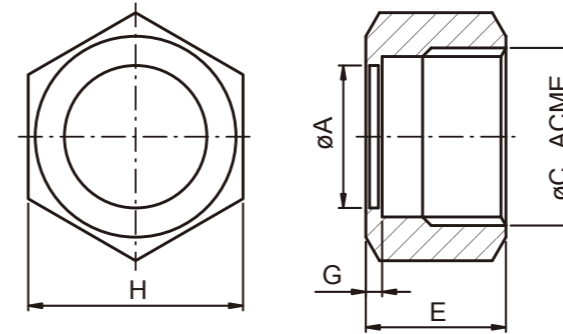


- Standards: BS 4825 Part 4.
- Applications: For the Food, Beverage, and other Hygiene Industry
- Working Pressures: Normal operating at pressures up to 16 Bar.
- Materials:
  - Round slotted Nut-----TP-304
  - Hex. Nut-----TP-304
  - Expanding Liner-----TP-304, 316, 316L
  - Expanding Male part-----TP-304, 316, 316L
  - Welding Liner-----TP-304, 316, 316L
  - Welding Male part-----TP-304, 316, 316L
  - Blank Round Nut-----TP-304, 316, 316L
  - Blank Hex. Nut-----TP-304, 316, 316L
  - Blank Liner-----TP-304, 316, 316L
  - Seal----EPDM, Silicone, Buna-N, Viton.
- Surface Finished: Ra Max 0.8um.
- Size range: 1"-----4"

# IDF UNION FITTINGS

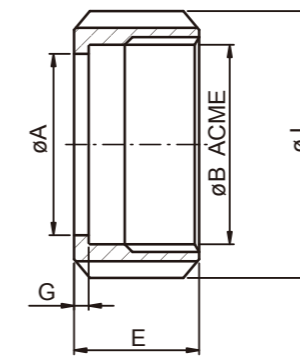


## IDF-13H 六角螺帽 IDF HEXAGONAL NUT



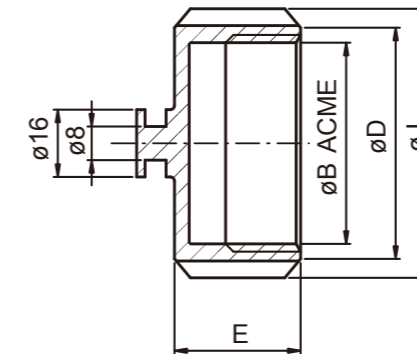
SIZE	A	C	E	G	H
1"	30.5	38.02*1/8T	30	3.5	46
1 1/2"	43.5	51.54*1/8T	30	3.5	60
2"	57	65.05*1/8T	30	3.5	75
2 1/2"	70.7	78.56*1/8T	30	3.5	90
3"	83.3	92.08*1/8T	30	3.5	105
4"	112	126.79*1/6T	35	4.7	133

## IDF-13R 圓螺帽 IDF ROUND SLOTTED NUT



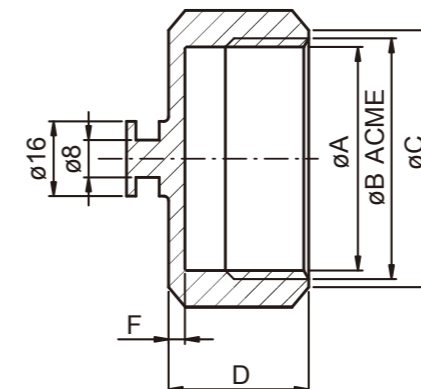
SIZE	A	B	E	G	J
1"	30.5	34.34*8T	30	3.5	48
1 1/2"	43.5	47.86*8T	30	3.5	64
2"	57	61.37*8T	30	3.5	77
2 1/2"	70.7	74.88*8T	30	3.5	91
3"	83.3	88.40*8T	30	3.5	106
4"	112.0	122.05*6T	35	4.7	142

## IDF-13RH 圓形盲螺帽 IDF BLANK ROUND NUT



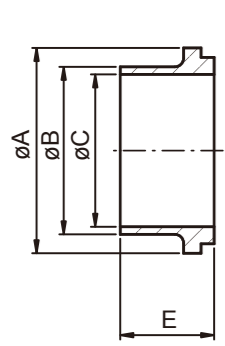
SIZE	B	D	E	J
1"	34.34*8T	41	30	48
1 1/2"	47.86*8T	55	30	64
2"	61.37*8T	68	30	77
2 1/2"	74.88*8T	82	30	91
3"	88.40*8T	97	30	106
4"	122.05*6T	130	35	142

## IDF-13AH 六角盲螺帽 IDF BLANK HEX NUT



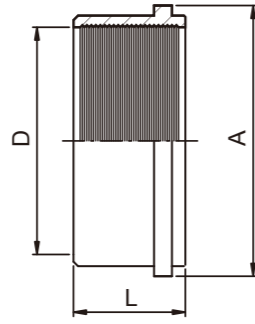
SIZE	A	B	C	D	F
1"	34.34	38.02	43	30	3.5
1 1/2"	47.86	51.54	57.8	30	3.5
2"	61.37	65.05	72.8	30	3.5
2 1/2"	74.88	78.56	87.6	30	3.5
3"	88.40	92.08	103.1	30	3.5
4"	122	126.79	128	35	4.7

# IDF UNION FITTINGS



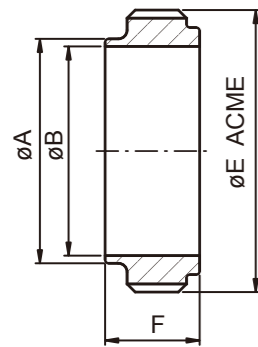
**IDF-14 無牙接頭**  
IDF WELD LINER

SIZE	A	B	C	E
1"	33.8	25.65	22.2	21.5
1 1/2"	47	38.35	34.9	21.5
2"	60.5	51.05	47.6	21.5
2 1/2"	74	63.75	60.3	21.5
3"	87.5	76.45	73	21.5
4"	120.6	101.85	97.6	30



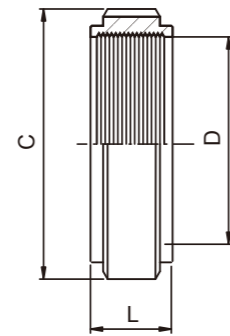
**IDF-14R 擴管平接頭**  
IDF EXPANDING LINER

SIZE	A	D	L
1"	33.8	25.5	20
1 1/2"	47.0	38.2	20
2"	60.5	50.9	25
2 1/2"	74.0	63.6	30
3"	87.5	76.3	30
4"	120.7	101.7	30



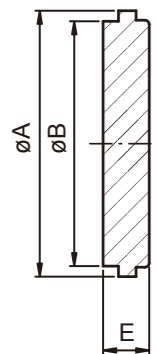
**IDF-15 有牙接頭**  
IDF WELD MALE

SIZE	A	B	E	F
1"	25.65	22.2	37.13*1/8	21.5
1 1/2"	38.35	34.9	50.65*1/8	21.5
2"	51.05	47.6	64.16*1/8	21.5
2 1/2"	63.75	60.3	77.67*1/8	21.5
3"	76.45	73	91.19*1/8	21.5
4"	101.85	97.6	125.9*1/6	30



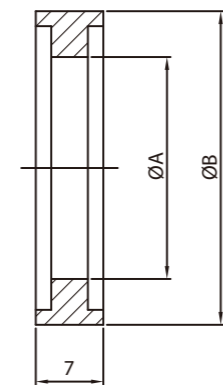
**IDF-15R 擴管牙接頭**  
IDF-EXPANDING MALE

SIZE	C	D	L
1"	37.1*8TACME	25.5	16.5
1 1/2"	50.6*8TACME	38.2	19.5
2"	64.1*8TACME	50.9	19.5
2 1/2"	77.6*8TACME	63.6	25.0
3"	91.1*8TACME	76.3	30.0
4"	125.9*6TACME	101.7	35.0



**IDF-14AH 盲板**  
IDF BLANK LINER

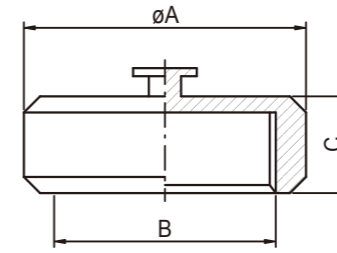
SIZE	A	B	E
1"	33.8	29.5	10.5
1 1/2"	47	42.5	10.5
2"	60.5	55.7	10.5
2 1/2"	74	68.8	10.5
3"	87.5	81.9	10.5
4"	120.6	111	12.6



**IDF 墊片(H型)**  
IDF SEAL RING

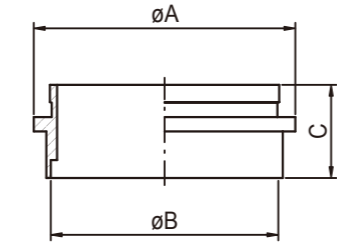
SIZE	$\phi A$	$\phi B$
1"	23	32.5
1.5"	36	46
2"	49	59.5
2.5"	60.7	73.2
3"	73.2	86.5
R 4"	98	113
H 4"	98	119.6

# MACON UNION FITTING



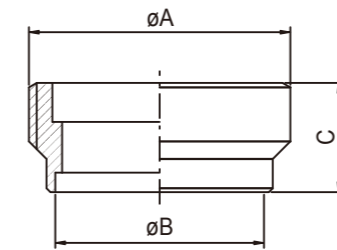
**ART-13AH 盲螺帽**  
MACON BLANK NUT

SIZE	A	B	C
40	70	M55×3	24
50	80	M67×3	24
60	92	M79×3.5	24
70	105	M90×3.5	24
80	116	M102×4	25
100	140	M125×4	25



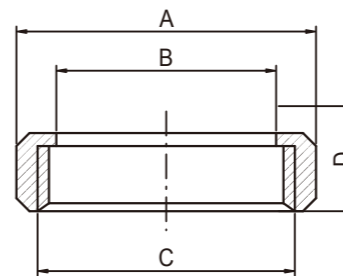
**ART-14 無牙接頭**  
MACON LINER

SIZE	A	B	C
40	50	40	26
50	63	50	26
60	73	60	26
70	85	70	26
80	96	80	26
100	118	100	26



**ART-15 有牙接頭**  
MACON MALE

SIZE	A	B	C
40	M55×3	43.5	28
50	M67×3	53.5	28
60	M79×3.5	63.5	28
70	M90×3.5	73.5	28
80	M102×4	83.5	28
100	M125×4	104	28



**ART-13 圓螺帽**  
MACON ROUND NUT

SIZE	A	B	C	D
40	70	47.5	M55×3	24
50	80	57.5	M67×3	24
60	92	67.5	M79×3.5	24
70	105	77.5	M90×3.5	24
80	116	90	M102×4	25
100	140	109	M125×4	25



Jui Ming Metal Industrial Co., Ltd.

# TRI-CLAMP FITTINGS

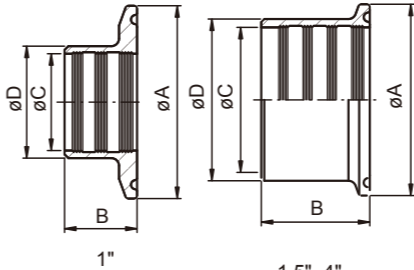


Clamp style fittings are designed to easily assemble or disassemble your lines and systems for maintenance and cleaning in place. Offers a variety of clamp fittings in TP-304, 316 and 316L materials. The Tri-Clamp system of stainless steel piping components is designed to provide a smooth, non-contaminating or non-corrosive environment for your product. Low cost, compact Tri-clamp components can be cleaned in place, they're fast and easy to take down, provide leak-tight connections and are readily adaptable to other forms of piping.

## TRI-CLAMP FITTINGS

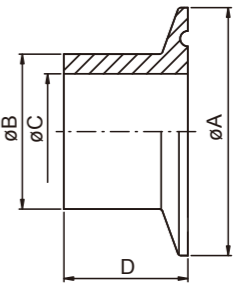


### 3A-14RMP 擴管接頭 3A EXPANDING FERRULE



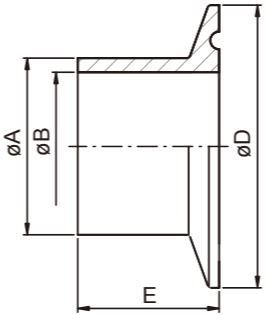
SIZE	A	B	C	D
1"	50.43	19.1	25.5	29.5
1 1/4"	50.43	28.6	31.9	36.3
1 1/2"	50.43	28.6	38.2	42.6
2"	63.93	33.3	50.9	55.7
2 1/2"	77.43	34.9	63.6	68.8
3"	90.93	36.5	76.3	81.9
4"	118.93	38.1	101.7	108.1

### 3A-14MPW 加厚接頭 FERRULE FOR TANK



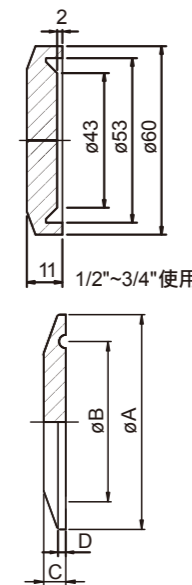
SIZE	A	B	C	D
1"	50.50	43.5	31	6.4
1 1/2"	50.50	43.5	31	6.4
2"	63.98	56.5	44.5	6.4
2 1/2"	77.50	70.5	58	6.4
3"	90.98	83.5	71.5	6.4
4"	118.92	110	91.3	7.9

### 3A-FERRULE 快裝接頭



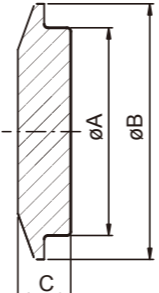
Size	B	A	D	E	E	E
1/2"	9.4	12.7	25.0	12.7	21.5	28.6
3/4"	15.7	19.05	25.0	12.7	21.5	28.6
1.0"	22.2	25.4	50.5	12.7	21.5	28.6
1 1/4"	28.6	31.8	50.5	12.7	21.5	28.6
1 1/2"	34.9	38.1	50.5	12.7	21.5	28.6
2.0"	47.6	50.8	64.0	12.7	21.5	28.6
2 1/2"	60.3	63.5	77.5	12.7	21.5	28.6
3.0"	73.0	76.2	91.0	12.7	21.5	28.6
4.0"	97.6	101.6	119.0	15.9	21.5	28.6
6.0"	146.8	152.5	166.8	22.23	21.5	28.6/38.1
6.0"	150.0	154.0	166.8	19.05	21.5	28.6/38.1
8.0"	197.6	203.3	217.7	22.23	21.5	28.6/38.1
8.0"	200.0	205.0	217.68	19.05	21.5	28.6/38.1
10"	247.2	254.1	268.5	22.23	21.5	28.6/38.1
10"	250.0	255.0	268.48	19.05	21.5	28.6/38.1
12"	298.0	304.9	319.3	22.23	21.5	28.6/38.1
12"	300.0	306.0	319.28	19.05	21.5	28.6/38.1

### 3A-16AMP 夾盲板 SOLID END CAP



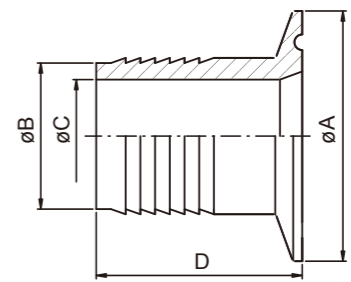
SIZE	A	B	C	D
A37	34.0	27.5	6.4	2.85
1"	50.5	43.5	6.4	2.85
1 1/2"	50.5	43.5	6.4	2.85
2"	64.0	56.5	6.4	2.85
2 1/2"	77.5	70.5	6.4	2.85
3"	91.0	83.5	6.4	2.85
3 1/2"	106.0	96.8	6.4	2.85
4"	119.0	110.0	7.9	2.85
6"	166.7	156.4	11.1	5.53
8"	217.7	207.2	11.1	5.53
10"	268.5	258.0	11.1	5.53
12"	319.3	308.8	11.1	5.53

### 14WI-CAP



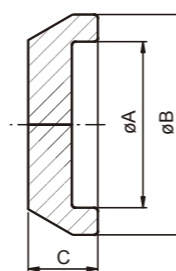
SIZE	A	B	C
1"	31.50	50.67	9.7
1 1/2"	44.20	50.67	9.7
2"	56.90	67.05	11.77
2 1/2"	69.60	84.00	15.52
3"	83.82	98.30	16.12
4"	109.14	123.70	16.12

### 14MPHR 插心接頭 HOSE ADAPTER



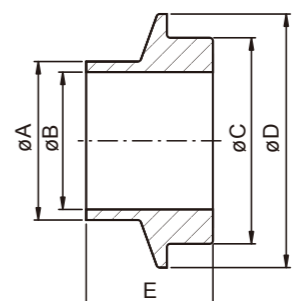
SIZE	A	B	C	D
1/2"	25.0	13.7	9.4	38.1
3/4"	25.0	21.3	15.7	38.1
1"	50.5	25.4	20.6	42.8
1 1/2"	50.5	38.1	33.3	42.8
2"	64.0	50.8	46	58.7
2 1/2"	77.5	63.5	58.7	59.5
3"	91.0	76.2	72.0	78.5
4"	119.0	101.6	97.6	86.5

### 15WI-CAP

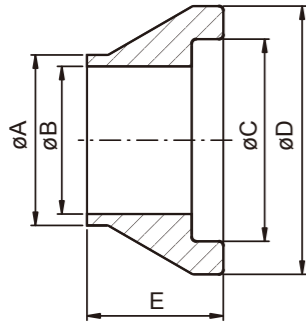


SIZE	A	B	C
1"	31.88	50.67	12.75
1 1/2"	44.58	50.67	12.75
2"	57.28	67.05	17.66
2 1/2"	69.98	84.00	18.77
3"	84.20	98.30	19.37
4"	109.60	123.70	19.37

### 14WI I-LINE FERRULE

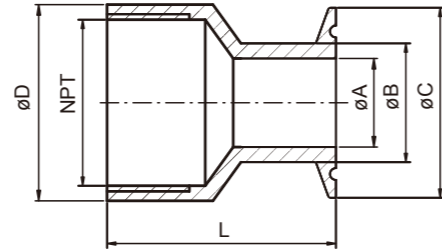


SIZE	A	B	C	D	E
1"	25.65	22.10	31.50	50.67	19.84
1 1/2"	38.35	34.80	44.20	50.67	23.8
2"	51.05	47.50	56.90	67.05	26.19
2 1/2"	63.75	60.20	69.60	84.00	29.36
3"	76.45	72.89	83.82	98.30	30.94
4"	101.85	97.38	109.14	123.70	34.11



### 15WI I-LINE FERRULE

SIZE	A	B	C	D	E
1"	25.65	22.10	31.88	50.67	19.84
1 1/2"	38.35	34.80	44.58	50.67	23.8
2"	51.05	47.50	57.28	67.05	26.19
2 1/2"	63.75	60.20	69.98	84.00	29.36
3"	76.45	72.89	84.20	98.30	30.94
4"	101.85	97.38	109.60	123.70	34.11

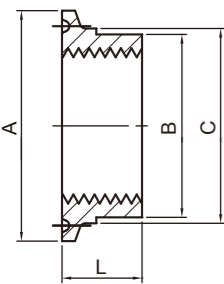


### 22MP FEMALE ADAPTER

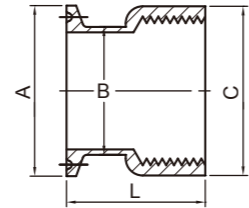
SIZE	A		B	D	E	NPT	L
	1.0"	1.5"					
1.0" & 1.5" x 1.	22.2	34.9	38.1	50.5	52	1.5" NPT	39
1.0" & 1.5" x 2.	22.2	34.9	38.1	50.5	65	2.0" NPT	39
2.0" x 2.0"	47.6		50.8	64	65	2.0" NPT	39
2.5" x 2.5"	60.3		63.5	77.5	80	2.5" NPT	50
3.0" x 2.5"	73		76.2	91	95	2.5" NPT	50
4.0" x 3.0"	73		76.2	91	95	3.0" NPT	52
6.0" x 4.0"	97.6		101.6	119	120	4.0" NPT	54

### 22MP FEMALE ADAPTER

PS内牙接環

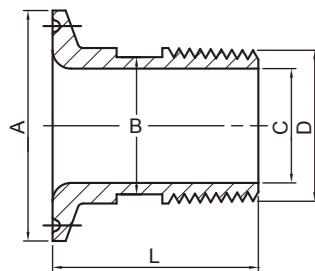


SIZE	A	B	C	L
3/4" x PS1/4"	Ø25.2	17	Ø19.05	12.7
1 1/2" x PS1/4"	Ø50.4	40	Ø42.6	17.5
1 1/2" x PS3/8"	Ø50.4	40	Ø42.6	17.5
1 1/2" x PS1/2"	Ø50.4	40	Ø42.6	17.5
1 1/2" x PS3/4"	Ø50.4	40	Ø42.6	17.5
1 1/2" x PS1"	Ø50.4	40	Ø42.6	17.5
2" x PS1 1/4"	Ø63.9		Ø55.7	17.5
2" x PS1 1/2"	Ø63.9		Ø55.7	17.5
2 1/2" x PS2"	Ø77.4		Ø68.8	17.5
3" x PS2 1/2"	Ø90.9		Ø81.9	17.5
4" x PS3"	Ø118.9		Ø108.1	17.5

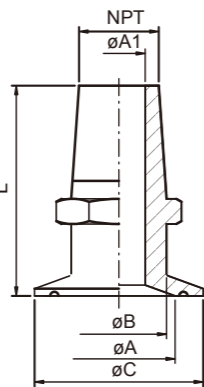


SIZE	A	B	C	L
3/4" x PS3/8"	25.2	19.05	26	35
3/4" x PS1/2"	25.2	19.05	26	35
1 1/2" x PS1/4"	50.4	42.8	50	41
1 1/2" x PS1/2"	50.4	42.8	54	41

PT外牙接環

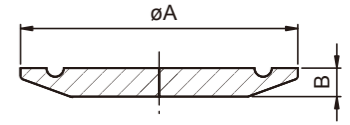


SIZE	A	B	C	D	L
3/4" x PT1/8"	25.2	17	5	PT1/8(10.5)	30
3/4" x PT1/4"	25.2	17	9	PT1/4(13.8)	30
3/4" x PT3/8"	25.2	17	10	PT3/8(17.3)	30
3/4" x PT1/2"	25.2	19	16	PT1/2(21.7)	40
3/4" x PT3/4"	25.2	19	16	PT3/4(27.2)	40
1 1/2" x PT1/8"	50.4	22	5	PT1/8(10.5)	30
1 1/2" x PT1/4"	50.4	22	7	PT1/4(13.8)	30
1 1/2" x PT3/8"	50.4	22	10	PT3/8(17.3)	30
1 1/2" x PT1/2"	50.4	22	17	PT1/2(21.7)	45
1 1/2" x PT3/4"	50.4	25	22.1	PT3/4(27.2)	45
1 1/2" x PT1"	50.4	30	25	PT1(34.0)	45
1 1/2" x PT1 1/4"	50.4		34.8	PT1 1/4(42.7)	45
1 1/2" x PT1 1/2"	50.4	42.8	41.9	PT1 1/2(48.6)	50
2" x PT1 1/2"	63.9		42	PT1 1/2(48.6)	50
2 1/2" x PT2"	77.4		50	PT2(60.5)	50
3" x PT2 1/2"	90.9		69	PT2 1/2(76.3)	50
3 1/2" x PT3"	106.0		80	PT3(89.1)	50



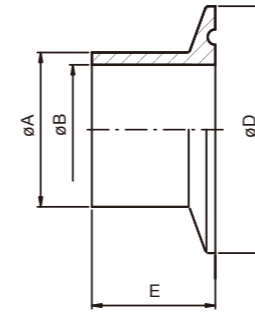
### 21MP MALE ADAPTER

SIZE	A1	A		B	C	NPT	L
		1.0"	1.5"				
1.0" & 1.5" x 1/4"	3.18	22.2	34.9	14	50.5	Ø13.25 1/4" 18	40
1.0" & 1.5" x 3/8"	6.35	22.2	34.9	18	50.5	Ø16.67 3/8" 18	40
1.0" & 1.5" x 1/2"	9.5	22.2	34.9	22	50.5	Ø20.71 1/2" 14	40
1.0" & 1.5" x 3/4"	15.8	22.2	34.9	27	50.5	Ø26.03 3/4" 14	45
1.0" & 1.5" x 1.0"	22.2	22.2	34.9	34	50.5	Ø32.59 1.0" 11-1/2	50
1.0" & 1.5" x 1.5"	34.9	22.2	34.9	38.1	50.5	Ø47.38 1.5" 11-1/2	50
1.0" & 1.5" x 2.0"	47.6	22.2	34.9	38.1	50.5	Ø59.40 2.0" 11-1/2	55
2.0" x 3/4"	15.8	47.6	50.8	64		Ø26.03 3/4" 14	50
2.0" x 1.0"	22.2	47.6	50.8	64		Ø32.59 1.0" 11-1/2	50
2.0" x 1.5"	34.9	47.6	50.8	64		Ø47.38 1.5" 11-1/2	50
2.0" x 2.0"	47.6	47.6	50.8	64		Ø59.40 2.0" 11-1/2	55
2.0" x 2.5"	60.3	47.6	50.8	64		Ø71.61 2.5" 8	60
2.0" x 3.0"	73	47.6	50.8	64		Ø87.39 3.0" 8	70
2.0" x 4.0"	97.6	47.6	50.8	64		Ø112.63 4.0" 8	75



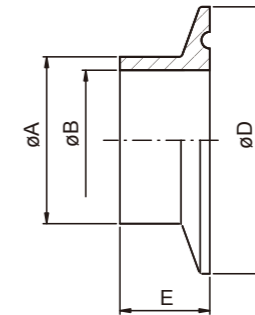
### ISO-FERRULE 快裝接頭

DN	A	B	D	E
8	13.5	10.3	34.0	28.6
10	17.5	14.0	34.0	28.6
15	21.6	18.1	34.0	28.6
20	26.9	23.7	50.5	28.6
25	33.7	30.5	50.5	28.6
32	42.4	38.4	50.5	28.6
40	48.3	45.1	64.0	28.6
50	60.3	56.3	77.5	28.6
65	76.1	72.1	91.0	28.6
80	88.9	84.9	106.0	28.6
100	114.3	110.3	130.0	28.6
125	139.7	133.7	155.0	28.6
150	168.3	162.3	183.0	28.6
200	219.1	211.1	233.5	28.6
250	273.0	267.0	319.3	28.6



### SMS-FERRULE 快裝接頭

SIZE	A	B	D	E
25	25.6	22.6	50.5	21.5
38	38.6	35.6	50.5	21.5
51	51.6	48.6	64.0	21.5
63.5	64.1	60.3	77.5	21.5
76.1	76.7	72.9	91.0	21.5
101.6	102.5	97.6	119.0	21.5
152.4	152.5	146.8	166.8	21.5



### BS-FERRULE BS4825

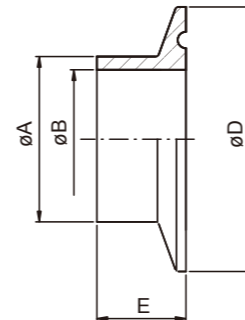
快裝接頭

SIZE	A	B	D	E
25.4	25.65	22.20	50.5	21.5
38.1	38.35	34.90	50.5	21.5
50.8	51.05	47.60	64.0	21.5
63.5	63.75	60.30	77.5	21.5
76.2	76.45	73.00	91.0	21.5
101.6	101.85	97.60	119.0	21.5
114.3	114.95	110.30	130.0	28.0
139.7	140.55	135.70	155.0	28.0
168.3	169.35	163.10	183.0	28.0
219.1	220.55	213.90	233.5	28.0

### DIN-FERRULE 32676

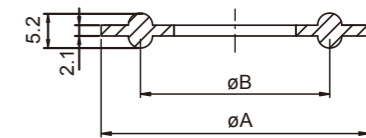
快裝接頭

DN	A	B	D	E
10	12.0	9.0	34.0	28.6
15	18.0	15.0	34.0	28.6
20	22.0	19.0	34.0	28.6
25	28.0	25.0	50.5	28.6
32	34.0	31.0	50.5	28.6
40	40.0	37.0	50.5	28.6
50	52.0	49.0	64.0	28.6
65	70.0	66.0	91.0	28.6
80	85.0	81.0	106.0	28.6
100	104.0	100.0	119.0	28.6
125	129.0	125.0	155.0	28.6
150	154.0	150.0	183.0	28.6
200	204.0	200.0	233.5	28.6



夾墊片

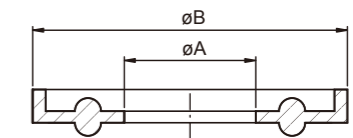
### 13PG 平面



SIZE	A	B
1/2"	21.8	9.9
3/4"	21.8	16.3
1.0"	50.0	22.7
1 1/4"	50.0	29.0
1 1/2"	50.0	43.5
2.0"	63.5	56.5
2 1/2"	76.2	70.5
3"	88.9	83.5
4"	118.0	110
6"	165.0	147.8
8"	216.0	196.6

夾墊片

### 13FGL 型



SIZE	A	B
1"	22.8	52.7
1 1/2"	35.8	52.7
2"	48.8	66.2
2 1/2"	60.5	79.7
3"	73.1	93.2
4"	97.8	121.2
6"	148.0	169.1
10"	249.0	270.7
12"	300.0	321.5



Jui Ming Metal Industrial Co., Ltd.

# TRI-CLAMP FITTINGS



Clamp style fittings are designed to easily assemble or disassemble your lines and systems for maintenance and cleaning in place.

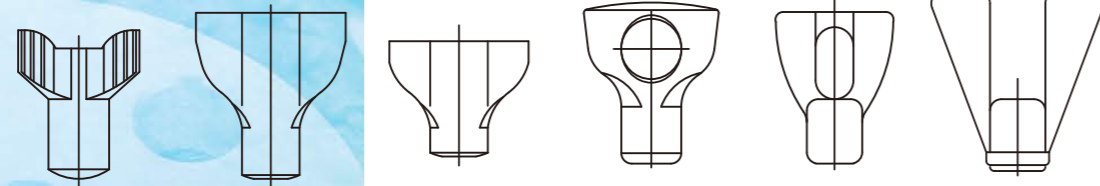
Offers a variety of clamp fittings in TP-304, 316 and 316L materials.

The Tri-Clamp system of stainless steel piping components is designed to provide a smooth, non-contaminating or non-corrosive environment for your product.

Low cost, compact Tri-clamp components can be cleaned in place, they're fast and easy to take down, provide leak-tight connections and are readily adaptable to other forms of piping.



## Wing-Nut For Clamp



13MHH-11  
A0105

13MHH-12  
A0106

13MHH-10  
A0109

13MHH-14  
A0102

13SP-2  
A0103

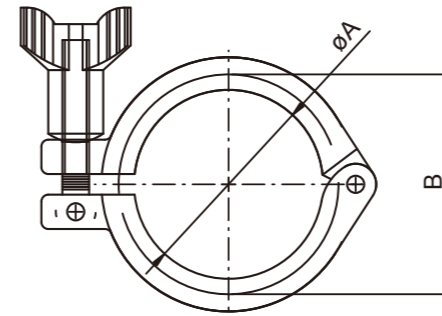
A0108

# TRI-CLAMP FITTINGS



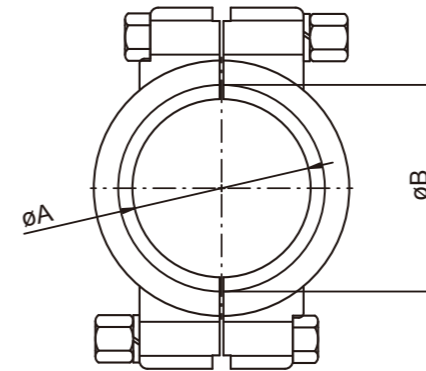
## 13MHH 單鉚釘夾帶 Heavy Duty Single Pin Clamp

SIZE	A	B
A37	27.8	37
1.5"	44.4	53.6
2.0"	57.8	67
2.5"	71.4	80.6
3.0"	84	94.2
4.0"	110	122.2
6.0"	155.4	170.4
8.0"	205	220



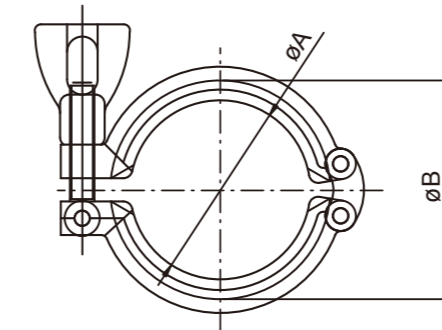
## 13MHP 高壓夾帶 High Pressure Clamp

SIZE	A	B
1/2"-3/4"	20	28
1.5"	43.3	52
2.0"	56.4	65.5
2.5"	69.5	79
3.0"	77.5	92.5
4.0"	109	120.5
6.0"	158	170
8.0"	222.5	237.5



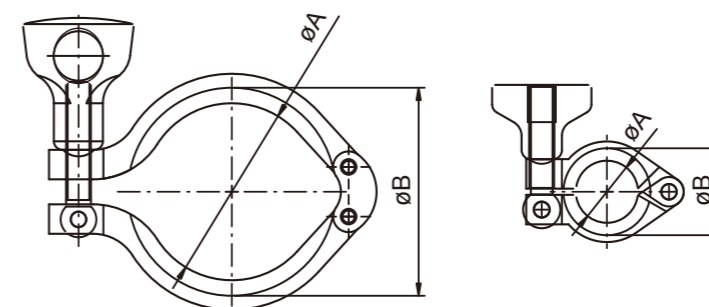
## 13SF 雙鉚釘夾帶 Heavy Duty Double Pin Clamp

SIZE	A	B
1/2"-3/4"	20	28
1.5"	45	58.6
2.0"	59	72
2.5"	67	84
3.0"	85	98
4.0"	114	127



## 13MHM 雙鉚釘夾帶 Heavy Duty Double Pin Clamp

SIZE	A	B
1/2"-3/4"	20	28
1.5"	43.6	53.6
2.0"	57	67
2.5"	70.6	80.6
3.0"	84	94
4.0"	112	122
6.0"	155	170
8.0"	205	220.8



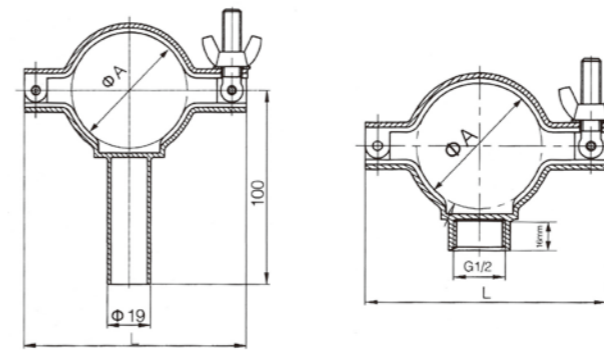


Jui Ming Metal Industrial Co., Ltd.

# TRI-CLAMP FITTINGS

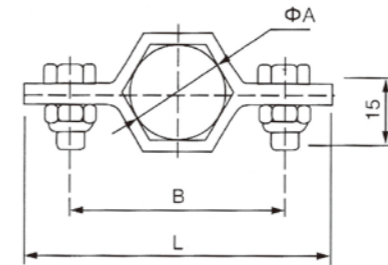


# PIPE HOLDER



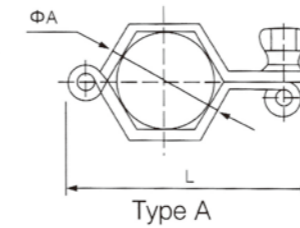
**QLG-TH1** 管支架  
TUBING HANGER

SIZE	A	L
1"	25.4	66
1.5"	38.1	79
2"	50.8	90
2.5"	63.5	105
3"	76.3	120
4"	101.6	146



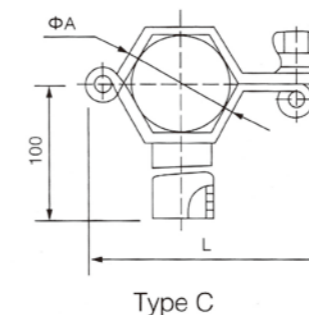
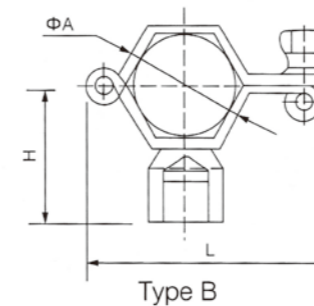
**QLG-TH2** ISO-六角管支架  
ISO-Hxe Tubing Hangers

SIZE	A	B	L
ISO21.3	21.3	48	68
ISO26.9	26.6	55	74
ISO33.7	33.7	63	82
ISO42.4	42.4	74	93
ISO48.3	48.3	82	101
ISO60.3	60.3	95	114
ISO88.9	88.9	130	149
ISO114.3	114.3	158	177



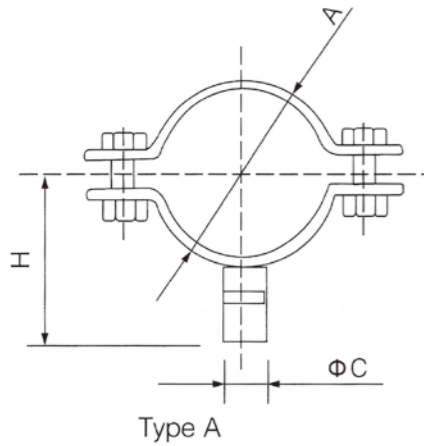
**QLG-TH3** 3A/SMS/DIN-六角管支架  
3A/SMS/DIN-Hxe Tubing Hangers

SIZE	A	B	L
SMS25	25	61	45
DIN25	28	64	46.5
DIN34	34	64	49.5
SMS38	38	76	51.5
DIN40	40	478	52.5
SMS51	51	90	58
DIN52	52	90	58.5
SMS63.5	63.5	106	64
DIN70	70	111	67.5
SMS76	76	120	70.5
DIN85	85	125	75
DIN101.6	101.6	146	83
SMS104	104	152	84.5





# PIPE HOLDER

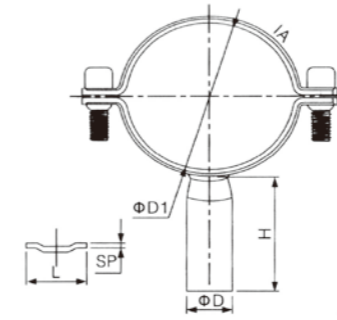


## QLG-TH5

DIN 管支架  
DIN Hangers

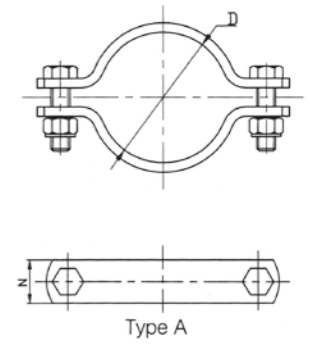
SIZE	A	H	øC	SIZE	A	H	øC
DN10	12 / 13	67.5	6	DN65	70	98	12
DN15	18 / 19	70.5	8	DN80	85	105.5	15
DN20	22 / 23	72.5	8	DN100	104	116	15
DN25	28 / 29	75.5	8	DN125	129	127	18
DN32	34 / 35	78.5/79.5	10	DN150	154	140	18
DN40	40 / 41	81.5/82.5	10	DN200	204		
DN50	52 / 53	88/89	12	DN250	254		

# PIPE HOLDER



## QLG-007

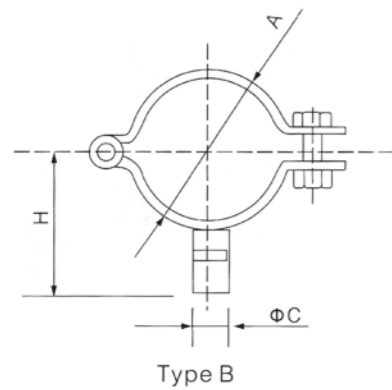
SIZE	D	D1	L	H	SP
1/4"	8	6.2	12	47	1.5
1/2"	8	12.5	12	47	1.5
3/4"	19	19	25	47	1.5
1"	19	25.4	25	47	1.5
1.5"	19	38.1	25	47	1.5
2"	19	50.8	25	47	1.5
2.5"	19	63.5	25	47	2
3"	19	76.2	25	47	2
4"	19	101.6	28	47	2
5"	19	129	28	47	2.5
6"	19	154	28	47	2.5
8"	25	204	35	47	3
10"	25	254	35	47	3
12"	25	304	35	47	3



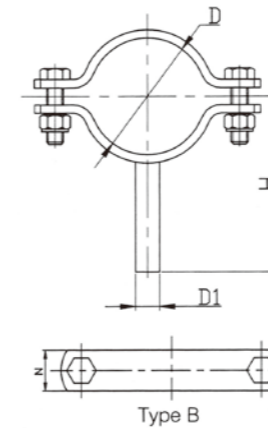
## QLG-013

SIZE	D	N
DN10	13	20
DN15	19	20
DN20	23	20
DN25	29	20
DN32	35	20
DN40	41	20
DN50	53	20
DN65	70	20
DN80	85	25
DN100	104	25
DN125	129	30
DN150	154	40
DN200	204	50
DN250	254	60

## INCH 管支架 INCH Hangers

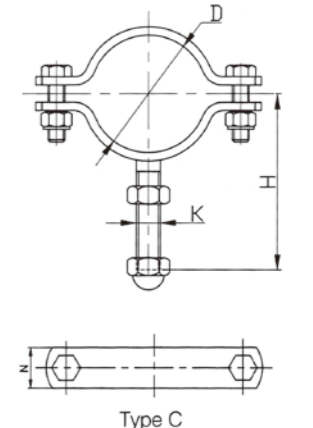


SIZE	A	H	øC	SIZE	A	H	øC
1"	25.5	84	10	NW20	22	61	10
1 1/4"	31.75	87	10	NW25	28	64	10
1 1/2"	38.1	90	10	NW32	34	67	10
2"	50.8	76	10	NW40	40	70	10
2 1/2"	63.5	85	10	NW50	52	76	10
3"	76.1	92.5	10	NW65	70	85	10
4"	101.6	102	10	NW80	85	92.5	10
5"	129	114.5	12	NW100	104	102	10
6"	154	127	12	NW125	129	114.5	12
8"	204	152	12	NW150	154	127	12
				NW200	204	152	12

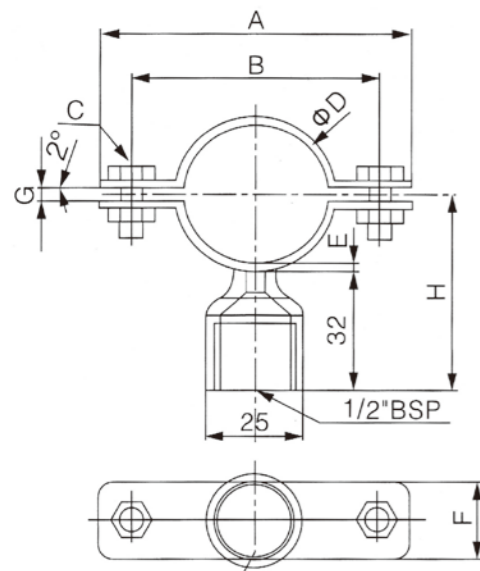


## QLG-1850055

SIZE	D	D1	H	N
DN10	13	8	64	20
DN15	19	8	67	20
DN20	23	8	69	20
DN25	29	10	72	20
DN32	35	10	75	20
DN40	41	10	78	20
DN50	53	12	84	20
DN65	70	12	93	20
DN80	85	12	100	25
DN100	104	12	110	25
DN125	129	16	140	30
DN150	154	16	180	40
DN200	204	20	240	50
DN250	254	24	280	60



SIZE	D	K	H	N
DN10	13	M8	74	20
DN15	19	M8	79	20
DN20	23	M8	79	20
DN25	29	M10	102	20
DN32	35	M10	105	20
DN40	41	M10	108	20
DN50	53	M12	114	20
DN65	70	M12	123	20
DN80	85	M12	130.5	25
DN100	104	M12	140	25
DN125	129	M16	168.5	30
DN150	154	M16	202	40
DN200	204	M20	255	50
DN250	254	M22	295	60



SIZE	øD	A	B	C	E	F	G	H
1"	25.5	55	40	M6xP1.0x16L	2	20	3	46.8
1 1/4"	31.75	60	46	M6xP1.0x16L	2	20	4	49.9
1 1/2"	38.1	80	65	M6xP1.0x16L	2	25	4	52
2"	50.8	90	70	M6xP1.0x16L	2	30	5	59.4
2 1/2"	63.5	120	102	M6xP1.0x16L	2.5	30	5	66.3
3"	76.1	138	118	M8xP1.25x20L	2.5	30	5	72.6
4"	101.6	180	145	M8xP1.25x20L	2.5	30	8	85.3
5"	129	207	186	M8xP1.25x20L	2.5	30	8	99
6"	154	232	205	M10xP1.5x25L	3	30	8	112
8"	204	285	265	M10xP1.5x25L	3	30	8	137



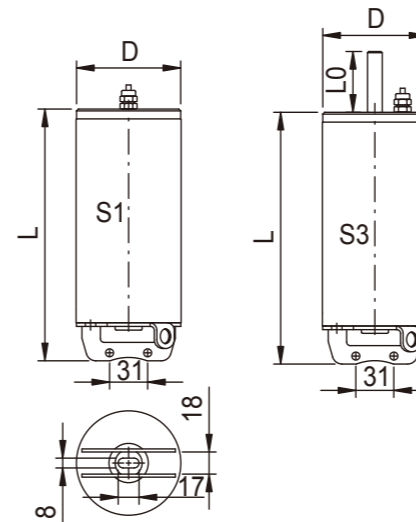


Jui Ming Metal Industrial Co., Ltd.

# BUTTERFLY VALVES



# BUTTERFLY VALVES



## Actuator

### S1&S3 /S104 Actuator

Size	For butterfly valve	D	L	L0
S1	1"-3" Dn25-76	85	205	
S3	1"-3" Dn25-76	85	205	50.5
S104	4" Dn104	120	250	

### Actuator Data

S1/S3 : Shut-off time:1.5 second / Weight : 3.85KGS.  
 S104 : Shut-off time:1.7 second / Weight : 4.7KGS.

### Technical data

Max. air pressure: .....7bar(700kPa).  
 Min.air pressure, NC and NO: .....5bar(500kPa)  
 Temperature range: .....-25°C to +90°C.

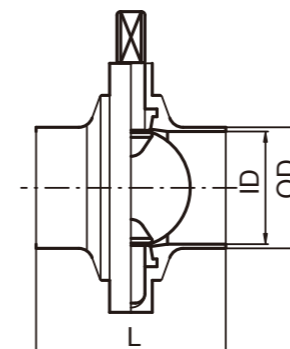
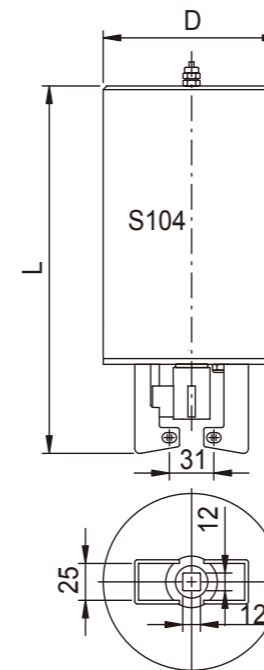
Air consumption (litres free air) S1/S3.....0.24\*P(bar).  
 Air consumption (litres free air) S104.....0.55\*P(bar).

Signal transfer :S1/S104 can be connect with M12 screw proximity switch  
 (PNP or NPN)

Signal transfer :S3 can be connect with M12 screw proximity switch(PNP or NPN)  
 or control box.

### Material:

Actuator body: .....Stainless steel AISI 304.  
 Piston : .....POM.  
 Seal : .....NBR.



### 焊式蝶閥

#### 3A Weld Butterfly valves

SIZE	ID	OD	L
1.0"	22.1	25.4	48
1.5"	34.8	38.1	48
2.0"	47.5	50.8	52
2.5"	60.2	63.5	54
3.0"	72.2	76.2	62
4.0"	97.6	101.6	80

#### SMS Weld Butterfly valves

SIZE	ID	OD	L
DN25	22.5	25	68
DN38	35.4	38	76
DN51	48	51	80
DN63	60.2	63.5	80
DN76	72.1	76.1	82
DN104	100	104	88

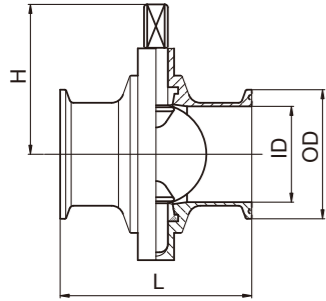
#### DIN Weld Butterfly valves

SIZE	ID	OD	L	H
DN28	25	28	68	61
DN34	31	34	76	64.3
DN40	37	40	76	74.3
DN52	49	52	80	77.6
DN70	66	70	82	84.8
DN85	81	85	84	91.6
DN104	100	104	88	101.6

# BUTTERFLY VALVES

3A夾式碟閥(長型)

**3A Clamp Butterfly valves**



SIZE	ID	OD	L	H
1.0"	22.1	50.5	90	61
1.5"	34.8	50.5	90	64.3
2.0"	47.5	64	95	74.3
2.5"	60.2	77.5	97	77.6
3.0"	72.2	91	103	84.8
4.0"	97.6	119	103	101.6
6.0"	146.4	166.8	143	133.5

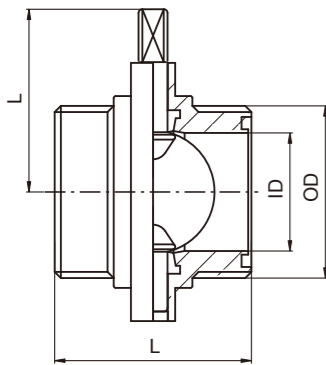
3A夾式碟閥

**3A Clamp Butterfly valves**

SIZE	ID	OD	L	H
1.0"	22.1	50.5	70	61
1.5"	34.8	50.5	70	64.3
2.0"	47.5	64	75	74.3
2.5"	60.2	77.5	80	77.6
3.0"	72.2	91	85	84.8
4.0"	97.6	119	100	101.6

SMS牙口碟閥

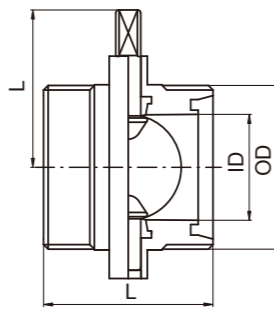
**SMS Male Butterfly valves**



SIZE	ID	OD	L	H
DN25	22.5	RD10*1/6	68	61
DN38	35.4	RD61*1/6	76	64.3
DN51	48	RD70*1/6	80	74.3
DN63	60.2	RD85*1/6	80	77.6
DN76	72.1	RD98*1/6	82	84.8
DN104	100	RD125*1/4	88	101.6

DIN牙口碟閥

**DIN Male Butterfly valves**

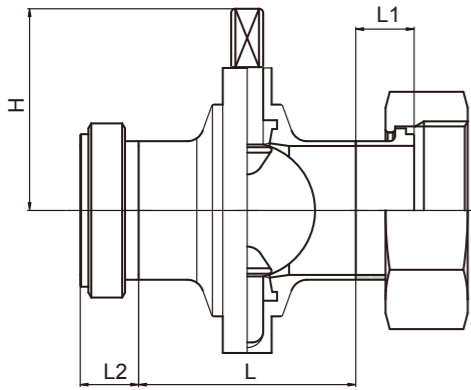


SIZE	ID	OD	L	H
DN28	25	RD52*1/6	68	61
DN34	31	RD58*1/6	76	64.3
DN40	37	RD65*1/6	76	74.3
DN52	49	RD78*1/6	80	77.6
DN70	66	RD95*1/6	82	84.8
DN85	81	RD110*1/4	84	91.6
DN104	100	RD130*1/4	100	101.6

IDF由任碟閥

**BUTTERFLY VALVES**

IDF Male part - nut and liner



SIZE	L	L1	L2	H
1.0"	68	21.5	16.5	61
1.5"	76	21.5	19.5	64.3
2.0"	80	21.5	19.5	74.3
2.5"	80	21.5	25.0	77.6
3.0"	82	21.5	30.0	84.8
4.0"	88	30.0	35.0	101.6

SMS由任碟閥

SMS Male part - nut and liner

SIZE	L	L1	L2	H
DN25	68	15.5	19	61
DN38	76	16.0	23	64.3
DN51	80	17.0	23	74.3
DN63.5	80	17.0	27	77.6
DN76	82	19.0	27	84.8
DN104	88	19.0	30	101.6

RJT由任碟閥

RJT Male part - nut and liner

SIZE	L	L1	L2	H
1.0"	68	19.5	27.0	61
1.5"	76	19.5	27.0	64.3
2.0"	80	19.5	27.0	74.3
2.5"	80	19.5	27.0	77.6
3.0"	82	19.5	27.0	84.8
4.0"	88	23.5	27.0	101.6

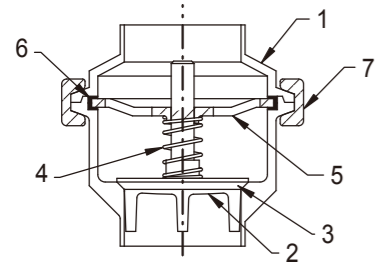
DIN由任碟閥

DIN Male part - nut and liner

SIZE	L	L1	L2	H
DN28	68	22	29	61
DN34	76	25	32	64.3
DN40	76	26	33	74.3
DN52	80	28	35	77.6
DN70	82	32	40	84.8
DN85	84	37	45	101.6
DN104	88	44	54	101.6

# NON-RETURN VALVES





NO.	Name
1	Body
2	Disc
3	Seal Ring
4	Spring
5	Plate
6	Ring
7	Clamp

Fig 1. Non-return valve

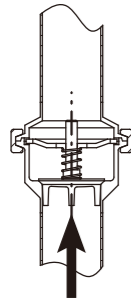


Fig.3. Show the optimal built-in situation. Other positions permitted are e.g. horizontal.

The four guide legs of the valve cone ensures good alignment.

Flow direction

### Material

- Steel parts: Stainless steel AISI 304 or acid-resistant steel AISI 316L.
- Seal ring: EPDM rubber
- Finish: Semi bright.

### Connections

The valve is available with welding ends for tubes according to 3A,SMS,BS,DIN 1 1850.

### Technical data

Required differential pressure for opening the valve when fitted in a vertical pipe, as shown in fig.3,is approx. 6kpa(0.06bar).

- Max. product pressure: 1000kpa(10bar).
- Max. temperature: 140°C(EPDM).
- Min. temperature: -10°C.

### Options

Material grades

A) Product wetted seal rings of nitrile(NBR) or Fluorinated rubber (FPM).

### Odering

Please state the following when ordering:

- Size.
- Steel grade, AISI 304 or AISI 316L.
- Rubber grade if not EPDM.

### Pressure drop / capacity diagram

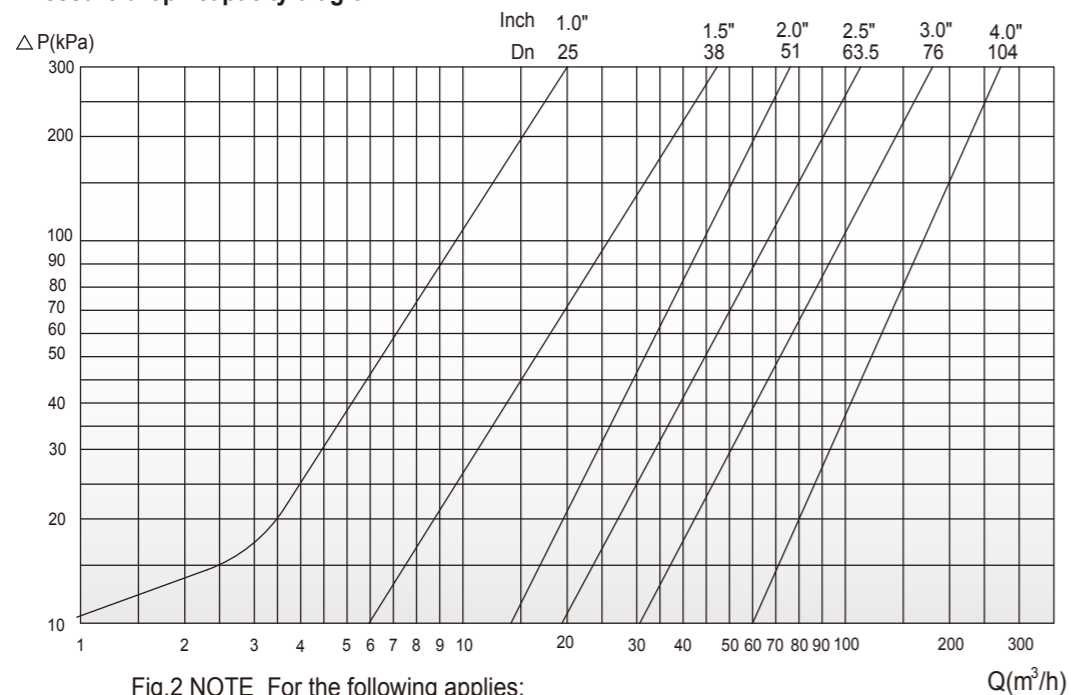
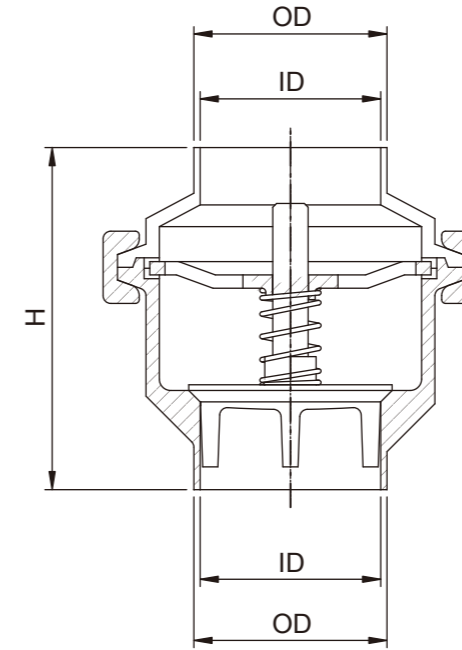


Fig.2 NOTE For the following applies:

Medium:Water(20°C)

Measurement:In accordance with VDI 2173



### 3A 焊式逆止閥

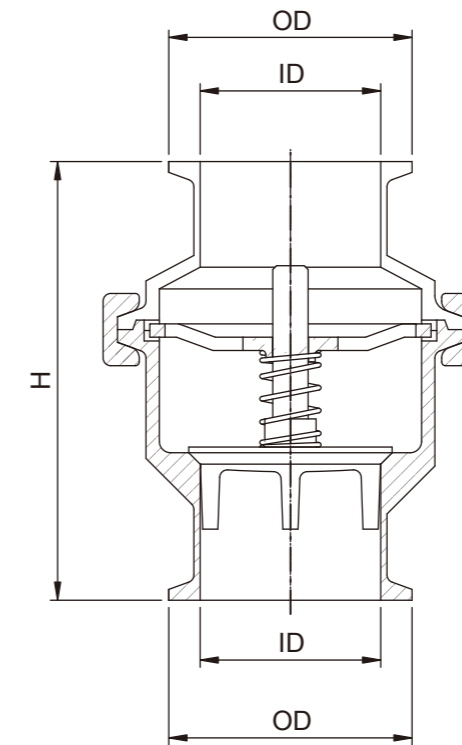
### 3A Weld Non-return valve

SIZE	ID	OD	H
1.0"	22.1	25.4	68.5
1.5"	34.8	38.1	80.5
2.0"	47.5	50.8	90
2.5"	60.2	63.5	95
3.0"	72.2	76.2	105
4.0"	97.6	101.6	105

### SMS 焊式逆止閥

### SMS Weld Non-return valve

DN	ID	OD	H
25	22.5	25	68.5
38	35.4	38	80.5
51	45	51	90
63	60.5	63.5	95
76	72	76	115
104	100	104	155



### DIN 焊式逆止閥

### DIN Weld Non-return valve

DN	ID	OD	H
28	25	28	68.5
34	31	34	80.5
40	37	40	80.5
52	49	52	90
70	66	70	115
85	81	85	120
104	100	104	155

### 3A 夾式逆止閥

### 3A Clamp Non-return valve

SIZE	ID	OD	H
1.0"	22.1	50.5	88.6
1.5"	34.8	50.5	94.3
2.0"	47.5	64	105
2.5"	60.2	77.5	116
3.0"	72.2	91	123.5
4.0"	97.6	119	123.5

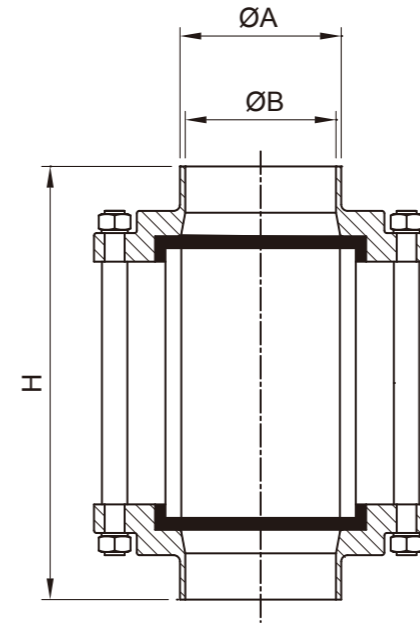


Jui Ming Metal Industrial Co., Ltd.

# SIGHT GLASS



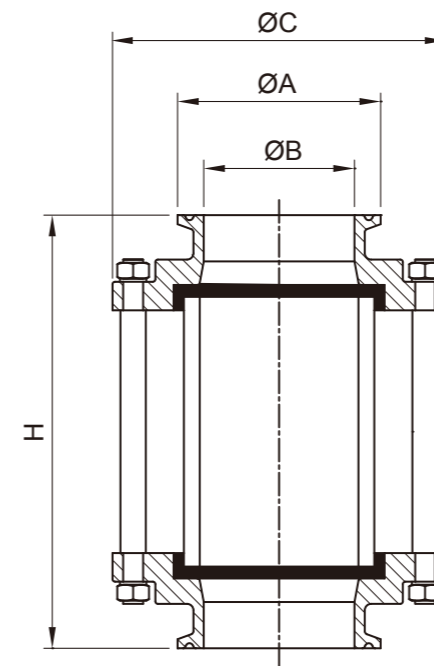
# SIGHT GLASS



3A 焊式玻璃视窗

3A Sight Glass Weld End

SIZE	ØA	ØB	H
1.0"	25.4	22.1	143
1.5"	38.1	34.9	151
2.0"	50.8	47.5	155
2.5"	63.5	60.2	155
3.0"	76.2	72	157
4.0"	101.6	97.6	163



3A 夾式玻璃视窗

3A Sight Glass Clamp End

SIZE	ØA	ØB	ØC	H
1.0"	50.5	22.2	78.0	159.0
1.5"	50.5	34.6	78.0	163.0
2.0"	64.0	47.5	86.0	169.0
2.5"	77.5	60.2	102.0	173.0
3.0"	91.0	72.8	120.0	177.0
4.0"	119.0	97.6	154.0	199.0

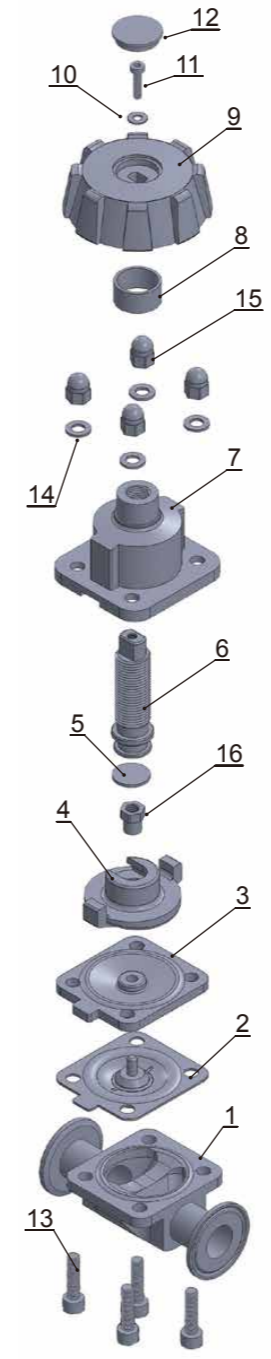


Jui Ming Metal Industrial Co., Ltd.

# DIAPHRAGM VALVE



## (3A)DIAPHRAGM VALVE 手動隔膜閥



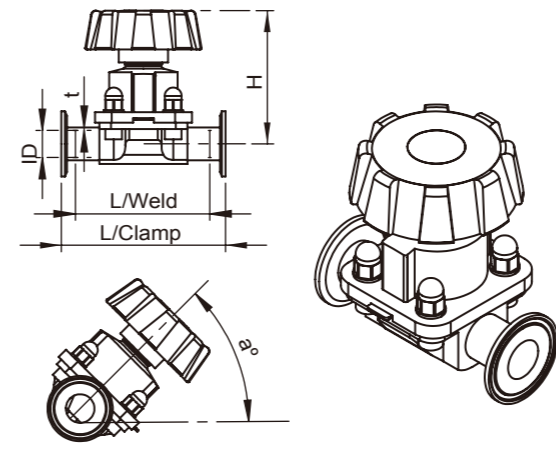
N0	PART NAME	QTY	MATERIAL
1	Diaphragm Valve Body	1	SS316L
2	Seal	1	PTFE
3	Seal	1	EPDM
4	Seat	1	SS304
5	Ring	1	POM
6	Shaft	1	SS304
7	Bonnet	1	SS304
8	Positioning Ring	1	NYLON
9	Handle Wheel	1	NYLON
10	Ring	1	SS304
11	Screw	1	SS304
12	Cover	1	NYLON
13	Screw	4	SS304
14	Spring Ring	4	SS304
15	Nut	4	SS304
16	Nut	1	SS304

### Technical data:

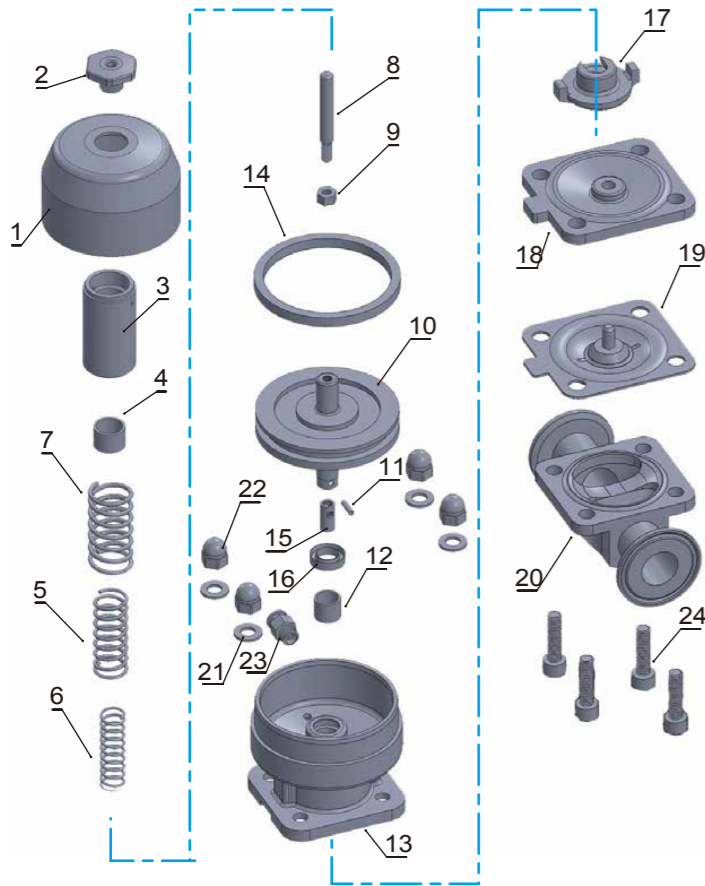
- Max product pressure : 10bar
- Max temperature : 90°C(EPDM)
- Min temperature : -10°C
- The valve body material : SS316L
- Diaphragm materials : PTFE+EPDM
- Working temperature : -20°C to150°C
- ASME BPE : Weld/Clamp
- Maximum pressure, valve body : 10 bar
- Maximum pressure, valve seat : 6 bar

### Valve body surface finishes, internal finish

- Ra<0.6µm mechanically polished internal,blasted external
- Ra<0.6µm electropolished internal/external
- Ra<0.4µm mechanically polished internal,blasted external
- Ra<0.4µm electropolished internal/external
- Ra<0.25µm mechanically polished internal/external
- Ra<0.25µm electropolished internal/external



Size	ID	t	H/NC	L/Weld	L/Clamp	α°	Part Number	
							Weld	Clamp
1/2"	9.5	1.65	75	108	108	41°	1607101-008047	1607102-008047
3/4"	15.8		75	108	108	33°	1607101-008067	1607102-008067
1.0"	22.1	116	120	127	25°	1607101-008107	1607102-008107	
1.5"	34.8	136	153	159	24°	1607101-008147	1607102-008147	
2.0"	47.5	136	173	190	30°	1607101-008207	1607102-008207	



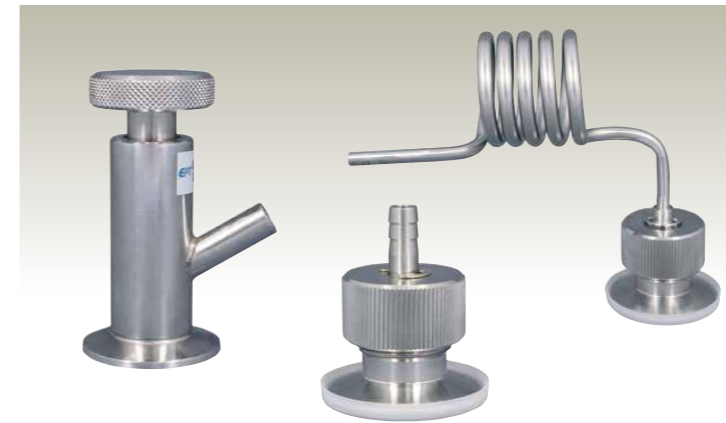
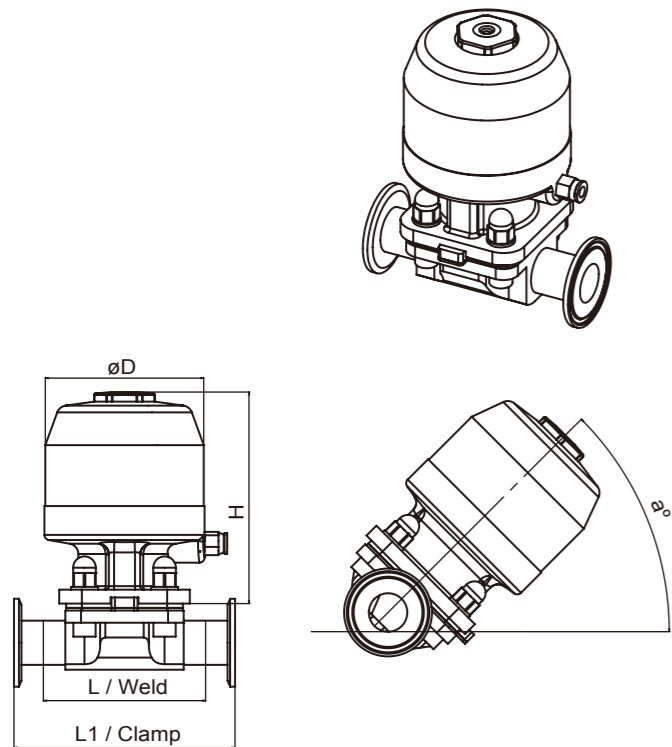
NO	PART NAME	QTY	MATERIAL
1	Cover	1	SS304
2	Nut	1	SS304
3	Stem	1	SS304
4	Bush	1	PEEK
5	Spring	1	SS304
6	Spring	1	SS304
7	Spring	1	SS304
8	Piston Stem	1	SS304
9	M5 Nut	1	SS304
10	Pinston	1	SS304
11	Pin	1	SS304
12	Bush	1	PEEK
13	Bonnet	1	SS304
14	U Ring	1	NBR
15	Piston	1	SS304
16	U Ring	1	NBR
17	Seat	1	SS304
18	Seal	1	EPDM
19	Seal	1	PTFE
20	Diaphragm Valve Body	1	SS316L
21	Spring Ring	4	SS304
22	M8 Nut	4	SS304
23	Air connection 1/8 Gas	1	Cu
24	Screw	4	SS304

NO	Material	Working pressure(max)
1	EPDM	10bar
2	PTFE/EPDM	6bar

### Standard:

- The valve body material : SS316L
- Diaphragm materials : PTFE+EPDM
- Working temperature : -20°C to 150°C
- Surface finish : Internal surface finishes Ra<0.4 mm
- ASME BPE : Weld/Clamp
- Maximum pressure valve body : 1.0Mpa
- Maximum pressure valve seat : 0.6Mpa
- Operating air pressure : 0.4Mpa

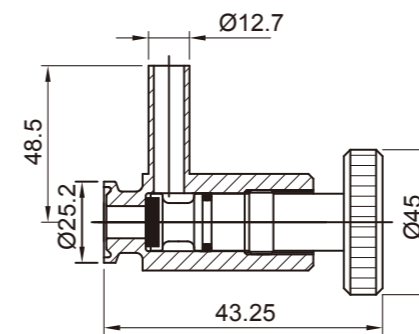
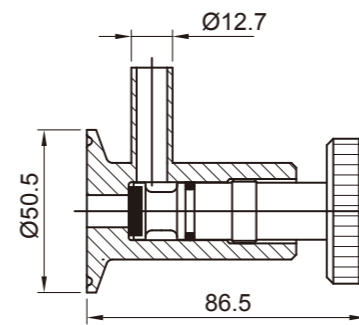
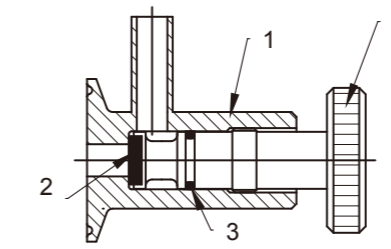
SIZE	L	L1	øD	H	a°	Part Number	
						Weld	Clamp
1/2"	108	108	60	77	41°	1607111-008047	1607112-008047
3/4"	108	108	60	100	33°	1607111-008067	1607112-008067
1.0"	120	127	90	130	25°	1607111-008107	1607112-008107
1.5"	153	159	114	168	24°	1607111-008147	1607112-008147
2.0"	173	190	144	200	30°	1607111-008207	1607112-008207



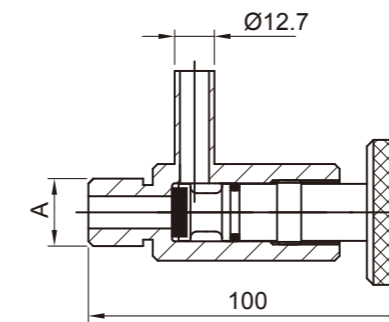
NO	DESIGNATION	QTY
1	Body	1
2	Seal	1
3	O-Ring	1
4	Screw Shaft	1

### Materials:

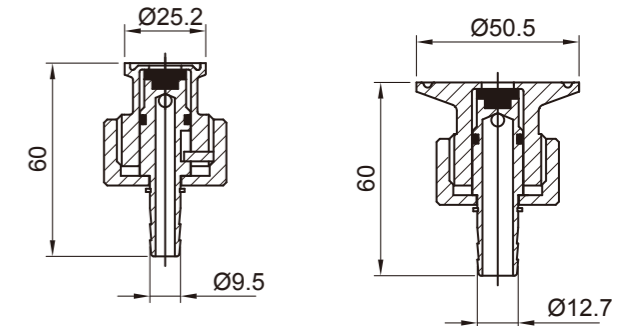
- Steel part: Stainless steel SS304 or SS316L
- Seal: EPDM or Teflon
- O-Ring: EPDM



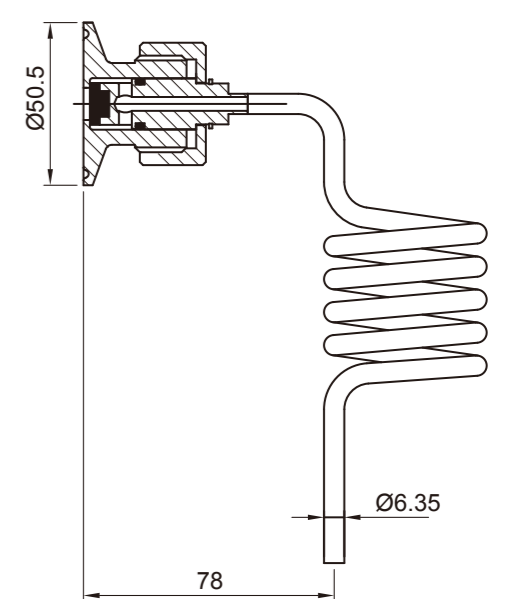
Clamp End Sample valve



Male End Sample valve



I Type Sample valve



Size	A
1/2	1/2 PF
3/8	NPT 3/8-14
1/4	NPT 1/4-14
3/8	PT 3/8-14
1/4	PT 1/4-14

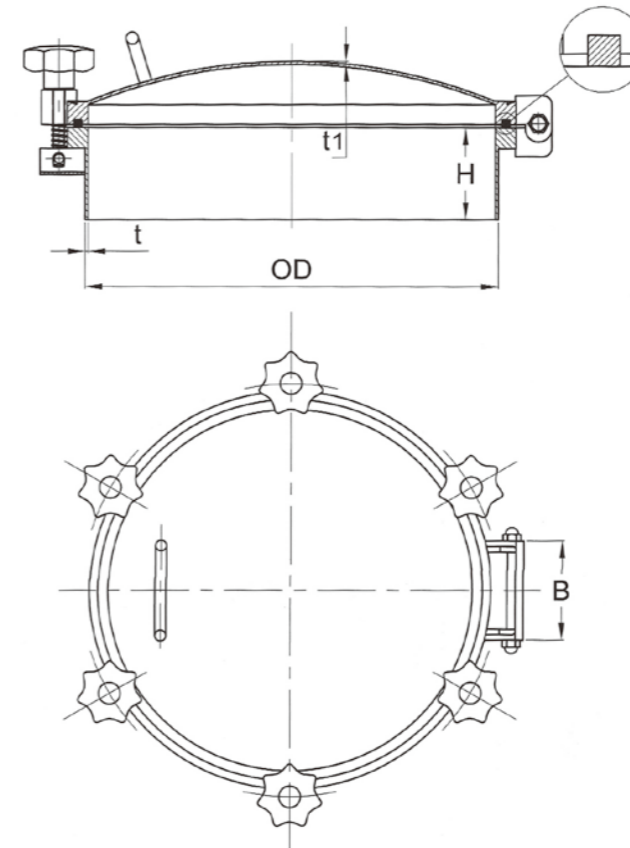


Jui Ming Metal Industrial Co., Ltd.

# SANITARY MANHOLE COVER

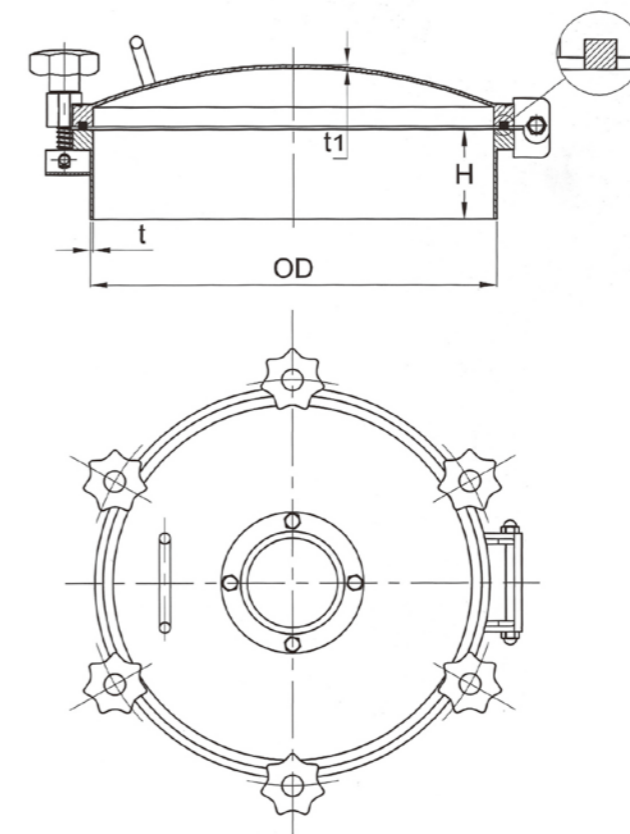


# SANITARY MANHOLE COVER



**Round Outward Manhole With Pressure**  
壓力型圓形人孔

Size	OD mm	t mm	H mm	t1 mm	Handwheel-Num	Pres (Bar)
200	206	3	100	3	4	1 - 3
300	306	3	100	3	4	1 - 3
350	356	3	100	3	5	1 - 3
400	406	3	100	3	6	1 - 3
430	436	3	100	3	6	1 - 3
450	456	3	100	3	6	1 - 3
500	508	4	100	3	6	1 - 3
600	608	4	100	4	6	1 - 3

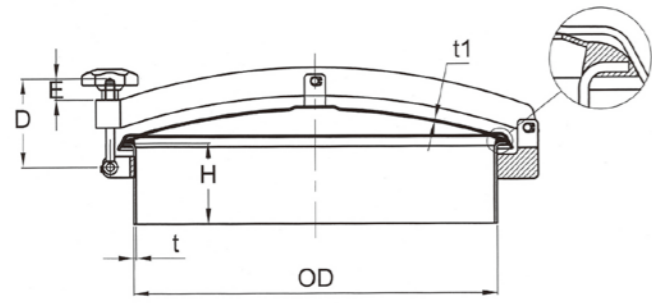


**Round Outward Manhole With Sight Glass**  
壓力型圓形人孔帶視鏡

Size	OD mm	t mm	H mm	t1 mm	Sight Glass	Pres (Bar)
200	206	3	100	3	DN80	1 - 3
300	306	3	100	3	DN80	1 - 3
350	356	3	100	3	DN80	1 - 3
400	406	3	100	3	DN80	1 - 3
430	436	3	100	3	DN80	1 - 3
450	456	3	100	3	DN80	1 - 3
500	508	4*	100	3	DN100	1 - 3
600	608	4	100	4	DN100	1 - 3



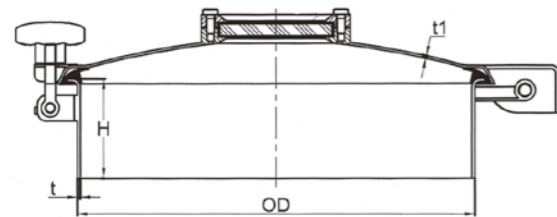
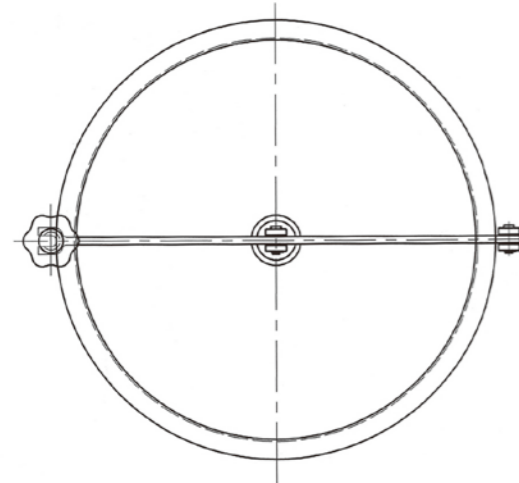
# SANITARY MANHOLE COVER 人孔蓋



## Round Outward Manhole

常壓型圓形人孔

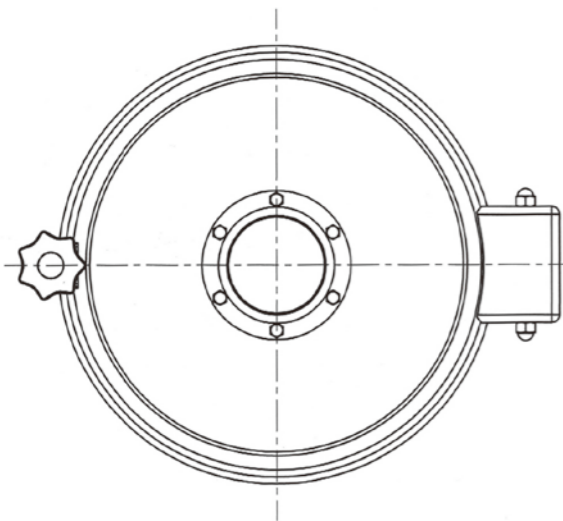
Size	OD mm	t mm	H mm	t1 mm	Pres (Bar)
200	200	2.5	100	2	0 - 0.1
219	219	2.5	100	2	0 - 0.1
300	300	2.5	100	2	0 - 0.1
350	350	2.5	100	2	0 - 0.1
400	400	3	100	2.5	0 - 0.1
430	430	3	100	2.5	0 - 0.1
450	450	3	100	2.5	0 - 0.1
500	500	3	100	2.5	0 - 0.1
600	600	4	100	3	0 - 0.1
420x300(Oval)	420x300	3	100	2.5	0 - 0.1



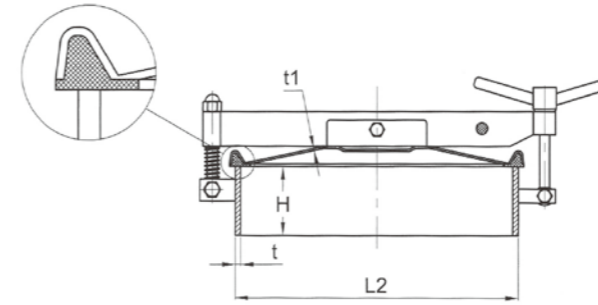
## Round Manhole With Sight Glass

常壓型圓形人孔帶視鏡

Size	OD mm	t mm	H mm	t1 mm	Sight Glass	Pres (Bar)
350	355	2.5	100	2.5	DN80	0 - 0.2
400	406	3	100	3	DN100	0 - 0.2
450	456	3	100	3	DN150	0 - 0.2
500	506	3	100	3	DN200	0 - 0.2
600	608	4	100	3	DN400/500	0 - 0.2

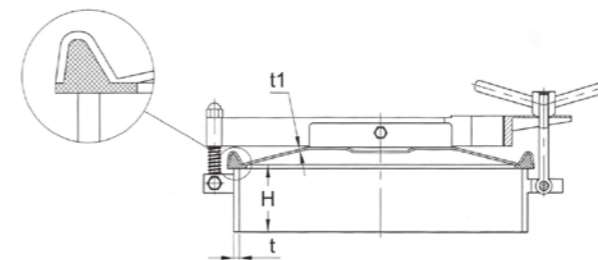
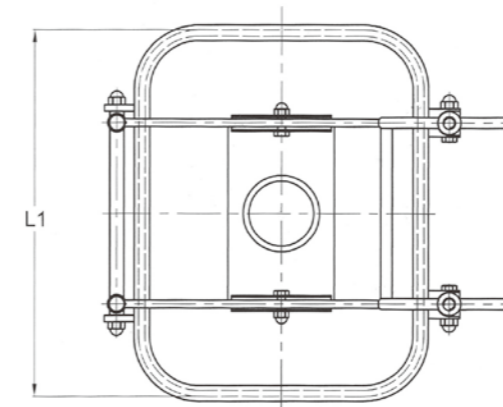


# SANITARY MANHOLE COVER 人孔蓋



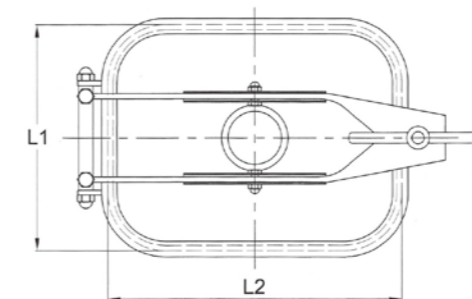
## Rectangular Manhole With Two Intersectant Arms

Size	OD mm L1*L2	t mm	H mm	t1 mm	Pres (Bar)
235*185	235*185	5	70	1.5	1 - 3
435*335	435*335	8	80	3	1 - 3
535*435	535*435	8	100	3	1 - 3
700*500	700*500	12	100	3	1 - 3



## Rectangular Manhole With One Intersectant Arms

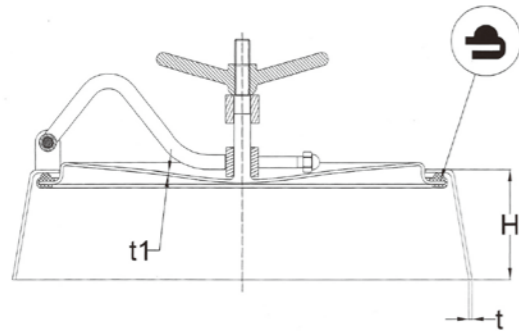
Size	OD mm L1*L2	t mm	H mm	t1 mm	Pres (Bar)
235*185	235*185	5	70	1.5	1 - 3
435*335	435*335	8	80	3	1 - 3
535*435	535*435	8	100	3	1 - 3
700*500	700*500	12	100	3	1 - 3





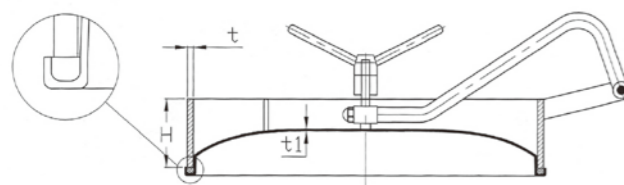
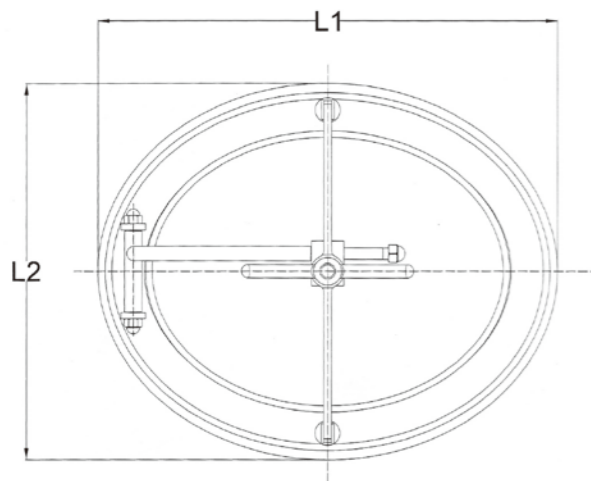


# SANITARY MANHOLE COVER



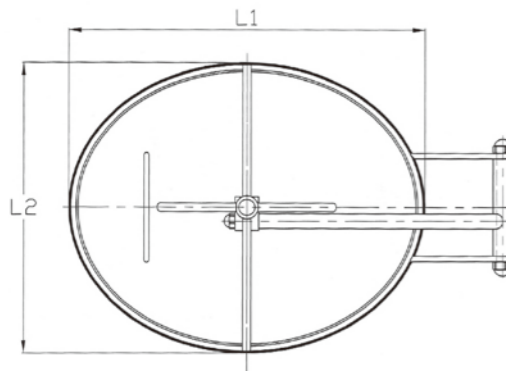
**Oval Inward Manhole With Bevel Edge**

Size	OD mm L1*L2	t1 mm	H mm	t2 mm	Pres (Bar)
550*450	550*450	3	80	4	1 - 3
550*-450A	550*450	4	80	5	1 - 3
565*465	565*465	4	100	5	1 - 3
580*480	580*480	4	133	5	1 - 3



**Oval Inward Manhole**

Size	OD mm L1*L2	t mm	H mm	t1 mm	Pres (Bar)
430*330	430*330	8	75	2.5	1 - 3
435*335	435*335	10	75	2.5	1 - 3
450*350	450*350	8	75	3	1 - 3
530*430	530*430	10	75	3	1 - 3
535*435	535*435	12	75	3	1 - 3
635*525	635*525	12	80	3	1 - 3



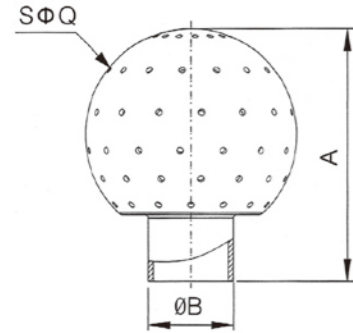
# SANITARY CLEANING BALL



Jui Ming Metal Industrial Co., Ltd.

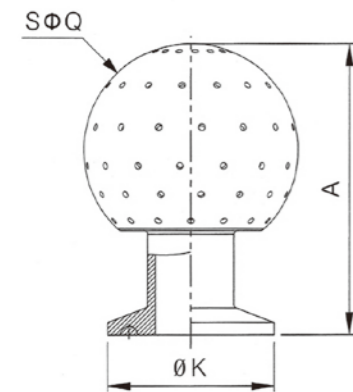


# SANITARY CLEANING BALL 清洗球



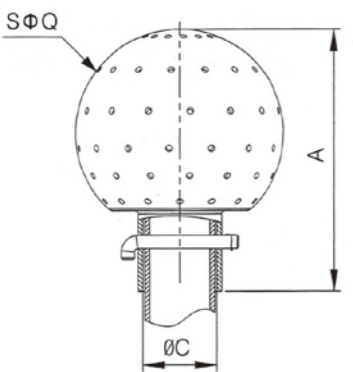
## Welded Fixed Cleaning Ball

DIN	øB	Size						A	Q
		3A	øB	SMS	øB	ISO	øB		
DN15	18.0	1/2"	12.7	12.7	12.7	12.7	54.0	40.0	
DN20	22.0	3/4"	19.05	19	19.05	ø19	64.0	50.0	
DN25	28.0	1"	25.4	25	25.4	ø25	72.0	63.0	
DN32	34.0	1 1/4"	31.8	32	31.8	ø32	79.0	65.0	
DN40	40.0	1 1/2"	38.1	38	38.1	ø38	85.0	476.0	
DN50	52.0	2"	50.8	51	50.8	ø51	87.0	91.0	
DN65	70.0	2 1/2"	63.5	63	63.5	ø63	102.0	100.0	



## Clamped Fixed Cleaning Ball

Size	A	Q	K
DN15	70.0	53.0	50.5
DN20	77.0	53.0	50.5
DN25	80.0	63.0	50.5
DN32	93.0	76.0	50.5
DN40	93.0	76.0	50.5
DN50	108.0	91.0	64.0
DN65	115.0	100.0	77.5

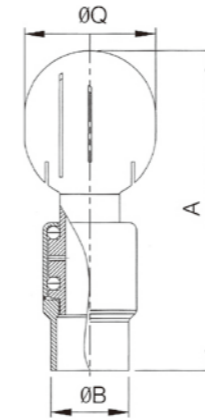


## Welded Fixed Cleaning Ball

DIN	øC	Size						A	Q
		3A	øC	SMS	øC	ISO	øC		
DN15	18.0	1/2"	12.7	12.7	12.7	ø12.7	54.0	40.0	
DN20	22.0	3/4"	19.05	19	19.05	ø19	64.0	50.0	
DN25	28.0	1"	25.4	25	25.4	ø25	72.0	63.0	
DN32	34.0	1 1/4"	31.8	32	31.8	ø32	79.0	65.0	
DN40	40.0	1 1/2"	38.1	38	38.1	ø38	85.0	476.0	
DN50	52.0	2"	50.8	51	50.8	ø51	87.0	91.0	
DN65	70.0	2 1/2"	63.5	63	63.5	ø63	102.0	100.0	

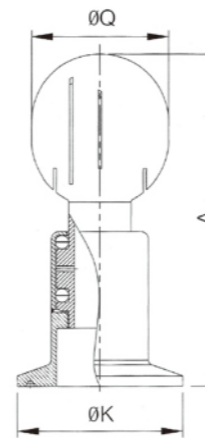


# SANITARY CLEANING BALL 清洗球



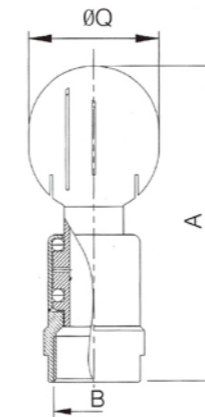
## Welded Rotary Cleaning Ball

DIN	øB	Size						A	Q
		3A	øB	SMS	øB	ISO	øB		
DN15	18.0	1/2"	12.7	12.7	12.7	ø12.7	110.0	40.0	
DN20	22.0	3/4"	19.05	19	19.05	ø19	137.0	53.0	
DN25	28.0	1"	25.4	25	25.4	ø25	143.0	53.0	
DN32	34.0	1 1/4"	31.8	32	31.8	ø32	145.0	53.0	
DN40	40.0	1 1/2"	38.1	38	38.1	ø38	145.0	53.0	
DN50	52.0	2"	50.8	51	50.8	ø51	180.0	76.0	
DN65	70.0	2 1/2"	63.5	63	63.5	ø63	200.0	76.0	



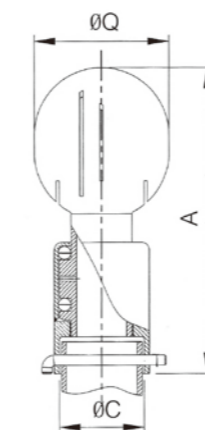
## Clamped Rotary Cleaning Ball

Size	A	Q	K
DN15	120.0	40.0	50.5
DN20	138.0	53.0	50.5
DN25	138.0	53.0	50.5
DN32	138.0	53.0	50.5
DN40	138.0	53.0	50.5
DN50	168.0	76.0	64.0
DN65	190.0	76.0	91.0



## Threaded Rotary Cleaning Ball

Size	A	Q	B
DN15	110.0	40.0	G 1/2
DN20	138.0	53.0	G3/4
DN25	140.0	53.0	G1
DN32	160.0	53.0	G 1 1/1
DN40	170.0	53.0	G 1 1/2
DN50	192.0	76.0	G2
DN65	220.0	76.0	G 2 1/2



## Bolted Rotary Cleaning Ball

DIN	øC	Size						A	Q
		3A	øC	SMS	øC	ISO	øC		
DN15	18.0	1/2"	12.7	12.7	12.7	ø12.7	110.0	40.0	
DN20	22.0	3/4"	19.05	19	19.05	ø19	137.0	53.0	
DN25	28.0	1"	25.4	25	25.4	ø25	135.0	53.0	
DN32	34.0	1 1/4"	31.8	32	31.8	ø32	137.0	53.0	
DN40	40.0	1 1/2"	38.1	38	38.1	ø38	150.0	53.0	
DN50	52.0	2"	50.8	51	50.8	ø51	168.0	76.0	
DN65	70.0	2 1/2"	63.5	63	63.5	ø63	190.0	76.0	



Jui Ming Metal Industrial Co., Ltd.

# 3A PIPE FITTING

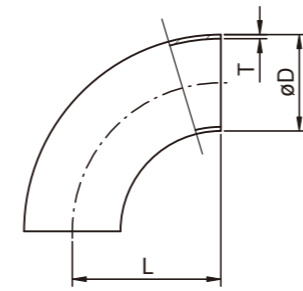


## 3A PIPE FITTING



90度短焊彎

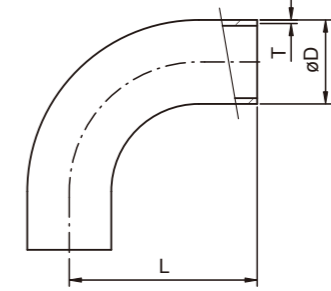
90° Short Elbow 2WCL



SIZE	D	L	T
1/2"	12.7	19.05	1.65
3/4"	19.05	28.60	1.65
1.0"	25.4	38.10	1.65
1.2"	31.8	47.70	1.65
1.5"	38.1	57.20	1.65
2.0"	50.8	76.20	1.65
2.5"	63.5	95.25	1.65
3.0"	76.2	114.30	1.65
4.0"	101.6	152.40	2.10
6.0"	152.4	228.60	2.77

90度長焊彎

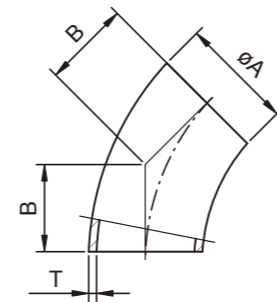
90° Long Elbow L2S



SIZE	D	L	T
1/2"	12.7	76.2	1.65
3/4"	19.05	76.2	1.65
1.0"	25.4	52.4	1.65
1.5"	38.1	74.6	1.65
2.0"	50.8	103.2	1.65
2.5"	63.5	131.8	1.65
3.0"	76.2	160.3	1.65
4.0"	101.6	211.1	2.10

45度短焊彎

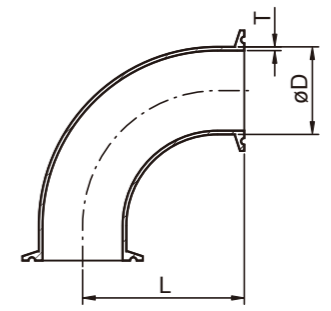
45° Short Elbow 2WK



SIZE	A	B	T
1.0"	25.4	15.8	1.65
1.5"	38.1	23.8	1.65
2.0"	50.8	31.75	1.65
2.5"	63.5	39.6	1.65
3.0"	76.2	47.6	1.65
4.0"	101.6	63.5	2.10

90度短夾彎

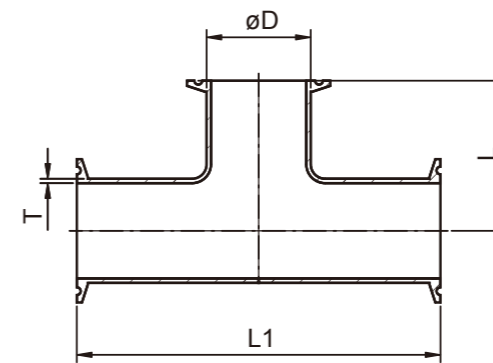
90° Clamp Elbow 2CMP



SIZE	D	L	T
1/2"	12.7	41.3	1.65
3/4"	19.05	41.3	1.65
1.0"	25.4	50.8	1.65
1.5"	38.1	69.9	1.65
2.0"	50.8	88.9	1.65
2.5"	63.5	107.95	1.65
3.0"	76.2	127.0	1.65
4.0"	101.6	168.2	2.10

長三通夾式

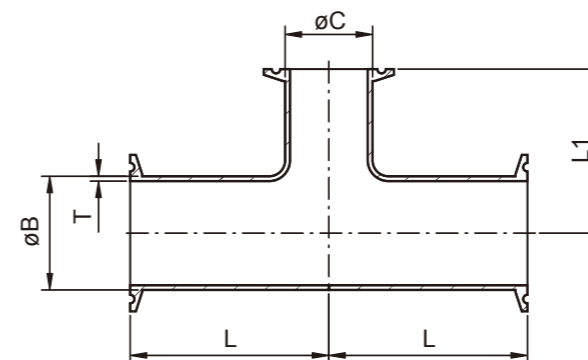
Clamp Long Tee 7MP



SIZE	D	L	L1	T
1/2"	12.7	35.2	70.4	1.65
3/4"	19.05	41.3	82.6	1.65
1.0"	25.4	60.3	120.6	1.65
1.5"	38.1	69.9	139.8	1.65
2.0"	50.8	88.9	177.8	1.65
2.5"	63.5	88.9	177.8	1.65
3.0"	76.2	95.3	190.6	1.65
4.0"	101.6	114.2	228.4	2.10

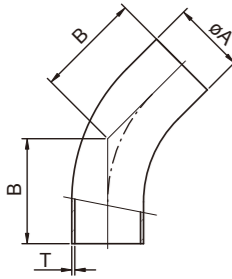
L7RMP異徑長三通夾式

Reducing Tee Clamp End L7RMP



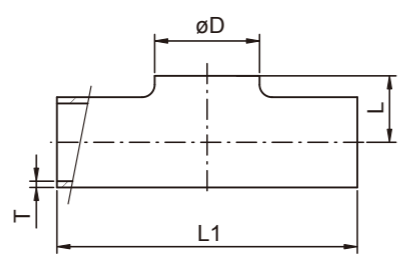
SIZE	B	C	L	L1	T
1.5" × 1.0"	38.1	25.4	69.85	66.68	1.65
2.0" × 1.0"	50.8	25.4	88.90	73.00	1.65
2.0" × 1.5"	50.8	38.1	88.90	76.20	1.65
2.5" × 1.5"	63.5	38.1	88.90	82.55	1.65
2.5" × 2.0"	63.5	50.8	88.90	95.25	1.65
3.0" × 1.5"	76.2	38.1	95.25	88.90	1.65
3.0" × 2.0"	76.2	50.8	95.25	101.60	1.65
3.0" × 2.5"	76.2	63.5	95.25	95.25	1.65
4.0" × 2.0"	101.6	50.8	114.2	114.30	2.10
4.0" × 2.5"	101.6	63.5	114.2	107.95	2.10
4.0" × 3.0"	101.6	76.2	114.2	107.95	2.10

45度長焊彎  
45° Long Elbow L2KS



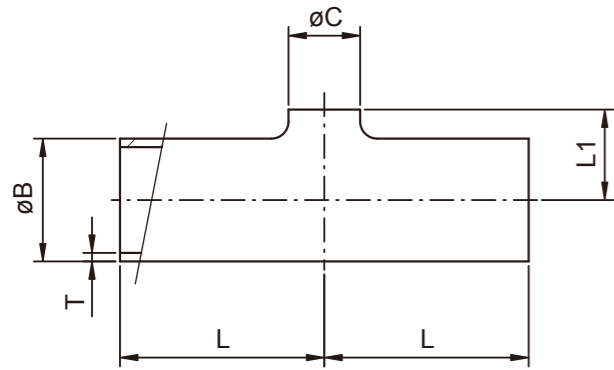
SIZE	A	B	T
1.0"	25.4	30.2	1.65
1.5"	38.1	41.3	1.65
2.0"	50.8	58.7	1.65
2.5"	63.5	76.2	1.65
3.0"	76.2	93.7	1.65
4.0"	101.6	122.2	2.10

7WVO平口短三通焊式  
Equal Tee W/O Straight end



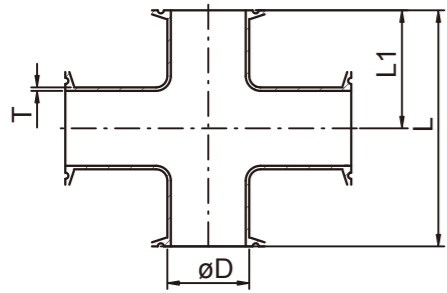
SIZE	D	L	L1	T
1.0"	25.4	16	57.2	1.65
1.5"	38.1	22	84.2	1.65
2.0"	50.8	29	104.8	1.65
2.5"	63.5	35	119.0	1.65
3.0"	76.2	41	131.8	1.65
4.0"	101.6	54	174.6	2.10

7WVO異徑平口短三通焊式  
Reducing Tee W/O Straight end



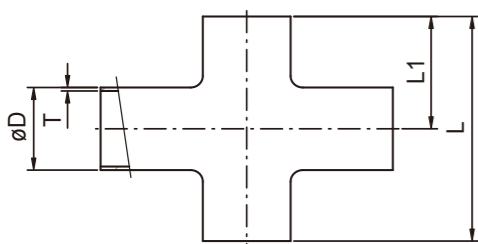
SIZE	B	C	L	L1	T
1.5" × 1.0"	38.1	25.4	42.1	22	1.65
2.0" × 1.5"	50.8	38.1	52.4	29	1.65
2.5" × 2.0"	63.5	50.8	59.5	35	1.65
3.0" × 2.0"	76.2	50.8	65.9	41	1.65
3.0" × 2.5"	76.2	63.5	65.9	41	1.65
4.0" × 2.0"	101.6	50.8	117.5	54	2.10
4.0" × 2.5"	101.6	63.5	117.5	54	2.10
4.0" × 3.0"	101.6	76.2	117.5	54	2.10

9MP長十字通夾式  
Clamp Long Cross 9MP



SIZE	D	L	L1	T
1.0"	25.4	120.6	60.3	1.65
1.5"	38.1	139.8	69.9	1.65
2.0"	50.8	177.8	88.9	1.65
2.5"	63.5	177.8	88.9	1.65
3.0"	76.2	190.6	95.3	1.65
4.0"	101.6	228.4	114.2	2.10

短十字通焊式  
Short Cross L9WWW

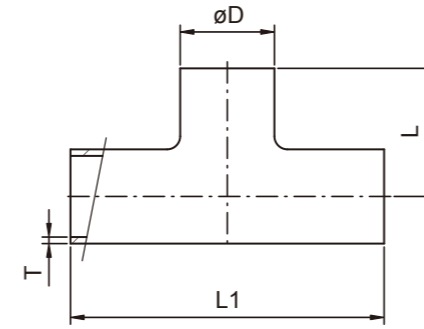


SIZE	D	L	L1	T
1.0"	25.4	57.2	28.6	1.65
1.5"	38.1	84.2	42.1	1.65
2.0"	50.8	104.8	52.4	1.65
2.5"	63.5	119.0	59.5	1.65
3.0"	76.2	131.8	65.9	1.65
4.0"	101.6	174.6	87.3	2.10

長十字通焊式  
Long Cross L9W

SIZE	D	L	L1	T
1.0"	25.4	95.2	47.6	1.65
1.5"	38.1	114.4	57.2	1.65
2.0"	50.8	152.4	76.2	1.65
2.5"	63.5	152.4	76.2	1.65
3.0"	76.2	165.2	82.6	1.65
4.0"	101.6	196.8	98.4	2.10

Welding Tee 短三通焊式  
Short Tee L7WWW

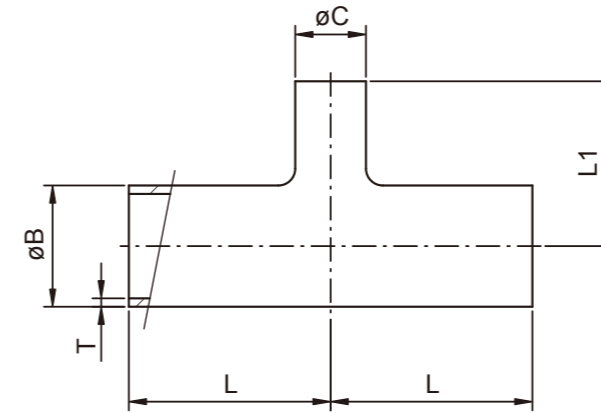


SIZE	D	L	L1	T
1/2"	12.7	28.6	57.2	1.65
3/4"	19.05	28.6	57.2	1.65
1.0"	25.4	28.6	57.2	1.65
1.5"	38.1	42.1	84.2	1.65
2.0"	50.8	52.4	104.8	1.65
2.5"	63.5	59.5	119.0	1.65
3.0"	76.2	65.9	131.8	1.65
4.0"	101.6	87.3	174.6	2.10

長三通焊式  
Long Tee 7W

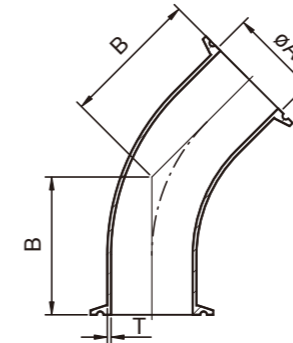
SIZE	D	L	L1	T
1/2"	12.7	54.0	108.0	1.65
1.0"	25.4	47.6	95.2	1.65
1.5"	38.1	57.2	114.4	1.65
2.0"	50.8	76.2	152.4	1.65
2.5"	63.5	76.2	152.4	1.65
3.0"	76.2	82.6	165.2	1.65
4.0"	101.6	98.4	196.8	2.10

Reducing Tee L7RW 異徑長三通焊式



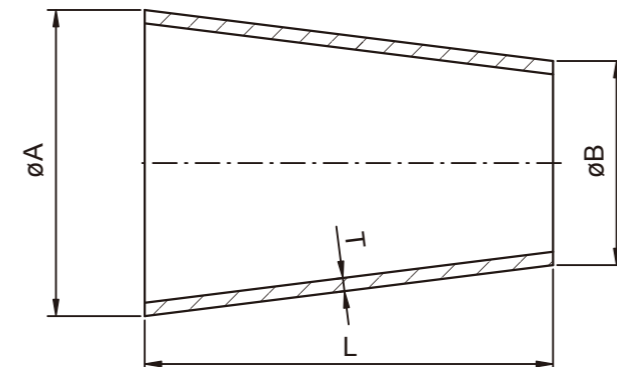
SIZE	B	C	L	L1	T
1.5" × 1.0"	38.1	25.4	57.15	53.98	1.65
2.0" × 1/2"	50.8	12.7	76.20	60.30	1.65
2.0" × 1.0"	50.8	25.4	76.20	60.30	1.65
2.0" × 1.5"	50.8	38.1	76.20	63.50	1.65
2.5" × 1.5"	63.5	38.1	76.20	69.85	1.65
2.5" × 2.0"	63.5	50.8	76.20	82.55	1.65
3.0" × 1.5"	76.2	38.1	82.55	76.20	1.65
3.0" × 2.0"	76.2	50.8	82.55	88.90	1.65
3.0" × 2.5"	76.2	63.5	82.55	82.55	1.65
4.0" × 2.0"	101.6	50.8	98.40	101.60	2.10
4.0" × 2.5"	101.6	63.5	98.40	95.25	2.10
4.0" × 3.0"	101.6	76.2	98.40	95.25	2.10

45° Clamp Elbow 2KMP 45度短夾彎



SIZE	A	B	T
3/4"	19.05	69.9	1.65
1.0"	25.4	28.5	1.65
1.5"	38.1	36.5	1.65
2.0"	50.8	44.45	1.65
2.5"	63.5	52.3	1.65
3.0"	76.2	60.3	1.65
4.0"	101.6	76.2	2.10

同心大小頭焊式  
Concentric Reducer L31

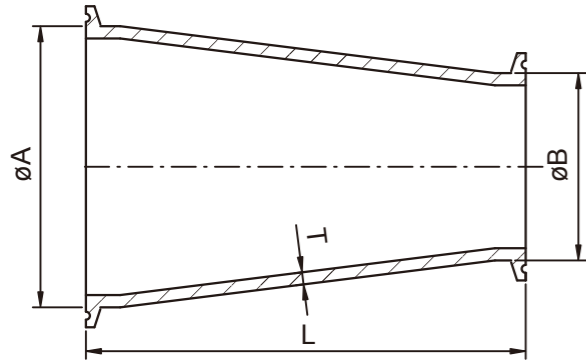


SIZE	A	B	L	T
1.0" × 1/2"	25.4	12.7	50.8	1.65
1.5" × 1.0"	38.1	25.4	50.8	1.65
2.0" × 1.5"	50.8	38.1	50.8	1.65
2.5" × 1.5"	63.5	38.1	101.6	1.65
2.5" × 2.0"	63.5	50.8	50.8	1.65
3.0" × 1.5"	76.2	38.1	152.4	1.65
3.0" × 2.0"	76.2	50.8	101.6	1.65
3.0" × 2.5"	76.2	63.5	50.8	1.65
4.0" × 1.5"	101.6	38.1	254.0	2.10
4.0" × 2.0"	101.6	50.8	203.2	2.10
4.0" × 2.5"	101.6	63.5	152.4	2.10
4.0" × 3.0"	101.6	76.2	101.6	2.10
1" × 3/4"	25.4	19.05	25.4	1.65
1.5" × 3/4"	38.1	19.05	76.2	1.65

# 3A PIPE FITTING

3A同心大小頭夾式

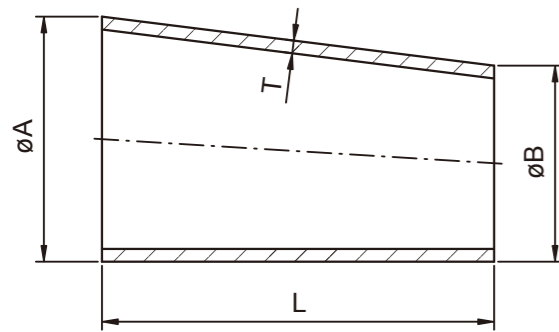
**Concentric Reducer 31-14MP**



SIZE	A	B	L	T
1.5"×1.0"	38.1	25.4	76.2	1.65
2.0"×1.5"	50.8	38.1	76.2	1.65
2.5"×1.5"	63.5	38.1	127.0	1.65
2.5"×2.0"	63.5	50.8	76.2	1.65
3.0"×1.5"	76.2	38.1	177.8	1.65
3.0"×2.0"	76.2	50.8	127.0	1.65
3.0"×2.5"	76.2	63.5	76.2	1.65
4.0"×1.5"	101.6	38.1	282.5	2.10
4.0"×2.0"	101.6	50.8	231.7	2.10
4.0"×2.5"	101.6	63.5	180.9	2.10
4.0"×3.0"	101.6	76.2	130.1	2.10

偏心大小頭焊式

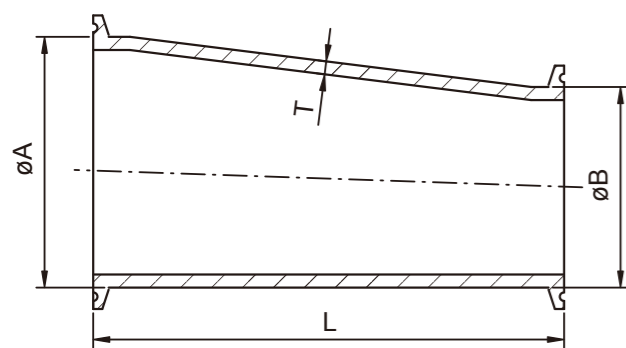
**Eccentric Reducer L32**



SIZE	A	B	L	T
1.5" × 1.0"	38.1	25.4	50.8	1.65
2.0" × 1.5"	50.8	38.1	50.8	1.65
2.5" × 1.5"	63.5	38.1	101.6	1.65
2.5" × 2.0"	63.5	50.8	50.8	1.65
3.0" × 1.5"	76.2	38.1	152.4	1.65
3.0" × 2.0"	76.2	50.8	101.6	1.65
3.0" × 2.5"	76.2	63.5	50.8	1.65
4.0" × 1.5"	101.6	38.1	254.0	2.10
4.0" × 2.0"	101.6	50.8	203.2	2.10
4.0" × 2.5"	101.6	63.5	152.4	2.10
4.0" × 3.0"	101.6	76.2	101.6	2.10

偏心大小頭夾式

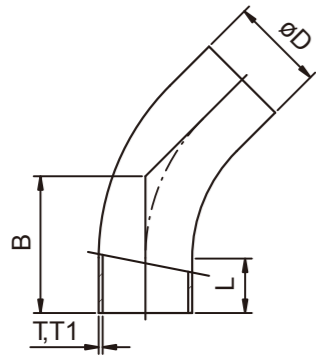
**Eccentric Reducer 32-14MP**



SIZE	A	B	L	T
1.5" × 1.0"	38.1	25.4	76.2	1.65
2.0" × 1.5"	50.8	38.1	76.2	1.65
2.5" × 1.5"	63.5	38.1	127.0	1.65
2.5" × 2.0"	63.5	50.8	76.2	1.65
3.0" × 1.5"	76.2	38.1	177.8	1.65
3.0" × 2.0"	76.2	50.8	127.0	1.65
3.0" × 2.5"	76.2	63.5	76.2	1.65
4.0" × 1.5"	101.6	38.1	282.5	2.10
4.0" × 2.0"	101.6	50.8	231.7	2.10
4.0" × 2.5"	101.6	63.5	180.9	2.10
4.0" × 3.0"	101.6	76.2	130.1	2.10

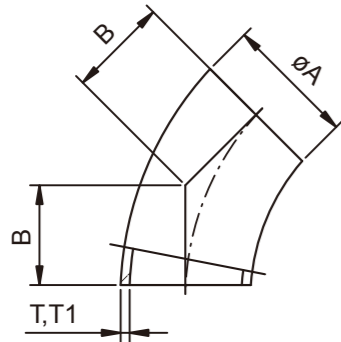
# SMS PIPE FITTING





**45° Long Elbow**

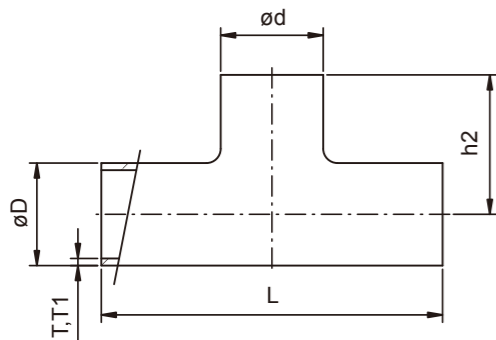
SIZE	D	L	B	T	T1
25	25	27	42.53	1.25	1.5
38	38	33	56.61	1.25	1.5
51	51	37	68.69	1.25	1.5
63.5	63.5	38	78.45	1.50	1.5
76	76.1	38	85.28	1.60	2.0
104	104	40	103.0	2.00	2.0



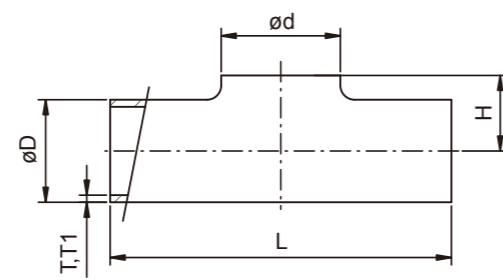
**45° Short Elbow**

SIZE	D	B	T	T1
25	25	15.53	1.25	1.5
38	38	23.61	1.25	1.5
51	51	31.69	1.25	1.5
63.5	63.5	39.45	1.50	1.5
76	76.1	47.28	1.60	2.0
104	104	63.0	2.00	2.0

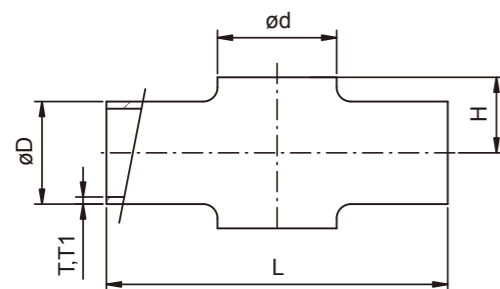
**Tee With Straight-End**



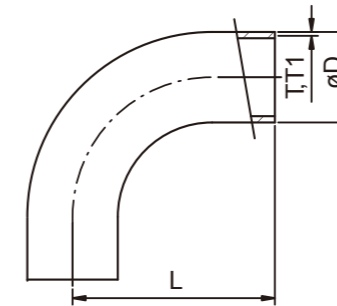
**Tee Without Straight-End**



**Welding Cross Without Straight-End**

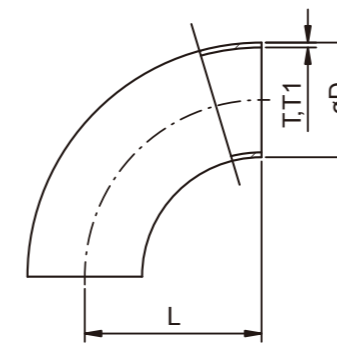


SIZE	$\phi D$	T	T1	L	h2	H	$\phi d$
25	25	1.25	1.5	10	55	15	25
38	38	1.25	1.5	140	70	21	38
51	51	1.25	1.5	164	82	29	51
63.5	63.5	1.5	1.5	210	105	36	63.5
76.1	76.1	1.6	2.0	220	110	44	76.1
104	104	2.0	2.0	300	150	58	104



**90° Long Tube Bend**

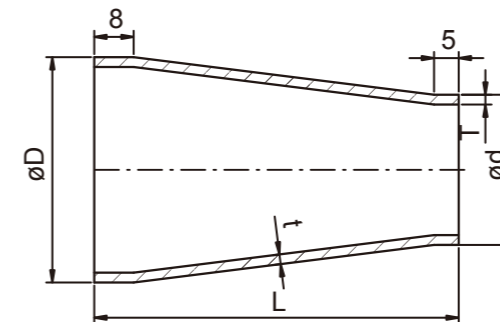
SIZE	D	L	T	T1
25	25	52.5	1.25	1.5
38	38	72.0	1.25	1.5
51	51	91.5	1.25	1.5
63.5	63.5	113.25	1.50	1.5
76	76.1	132.15	1.60	2.0
104	104	172.1	2.00	2.0



**90° Short Tube Bend**

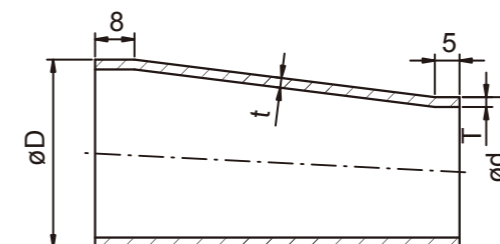
SIZE	D	L	T	T1
25	25	37.5	1.25	1.5
38	38	57.0	1.25	1.5
51	51	76.5	1.25	1.5
63.5	63.5	95.25	1.50	1.5
76	76.1	114.15	1.60	2.0
104	104	152.1	2.00	2.0

**Concentric Reducer**

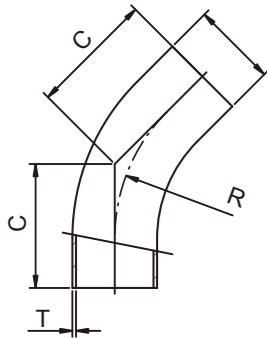


SIZE	$\phi D$	T	$\phi d$	t	L	L1
38 × 25	38	1.50	25	1.50	39	46
51 × 25	51	1.50	25	1.50	57	68
51 × 38	51	1.50	38	1.50	39	47
63.5 × 25	63.5	1.50	25	1.50	74	92
63.5 × 38	63.5	1.50	38	1.50	57	70
63.5 × 51	63.5	1.50	51	1.50	39	44
76 × 25	76.1	1.65	25	1.50	92	
76 × 38	76.1	1.65	38	1.50	74	92
76 × 51	76.1	1.65	51	1.50	57	68
76 × 63.5	76.1	1.65	63.5	1.65	39	47
104 × 51	104	2.00	51	1.50	95	117
104 × 63.5	104	2.00	63.5	1.50	78	94
104 × 76	104	2.00	76.1	1.60	60	74

**Eccentric Reducer**

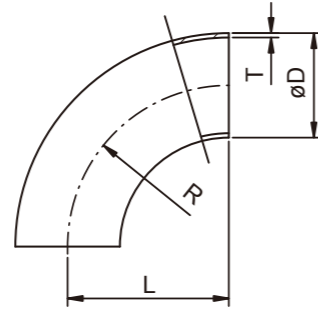


## 45° Long Elbow



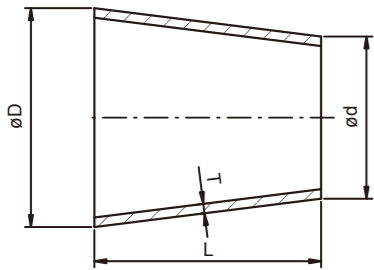
SIZE	D	C	R	T
DN25	28	20	20	1.5
DN32	34	23	23	1.5
DN40	40	20	20	1.5
DN50	52	27	27	1.5
DN65	70	30	30	2.0
DN80	85	33	33	2.0
DN100	104	40	40	2.0

## 90° Short Elbow

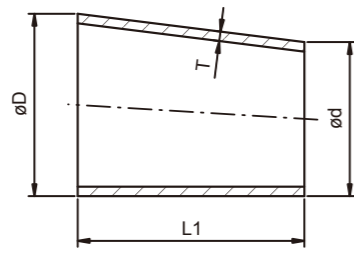


SIZE	D	L1	R	T
DN25	28	50	50	1.5
DN32	34	55	55	1.5
DN40	40	60	60	1.5
DN50	52	70	70	1.5
DN65	70	80	80	2.0
DN80	85	90	90	2.0
DN100	101.6	133	133	2.0
DN100	104	100	100	2.0

## Concentric Reducer

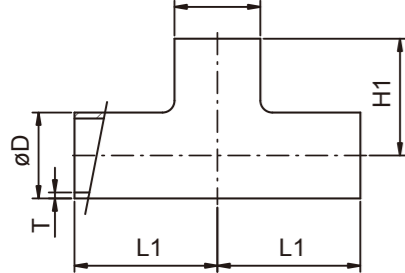


## Eccentric Reducer

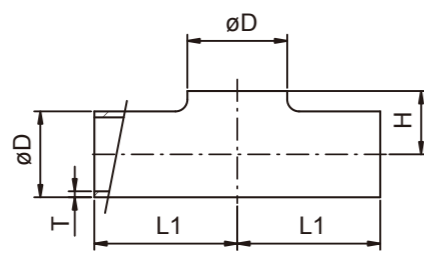


SIZE	øD	ød	T	L	L1
32 x 25	32	26	1.5	11	16.5
40 x 25	38	26	1.5	22	33
40 x 32	38	32	1.5	11	16.5
50 x 25	50	26	1.5	44	66
50 x 32	50	32	1.5	33	49.5
50 x 40	50	38	1.5	22	33
65 x 40	66	38	2.0	51	77
65 x 50	66	50	2.0	29	44
80 x 50	81	50	2.0	56	85
80 x 65	81	66	2.0	27	41.2
100 x 50	100	50	2.0	90	137.5
100 x 65	100	66	2.0	61	93.5
100 x 80	100	81	2.0	34	52.5

## Tee

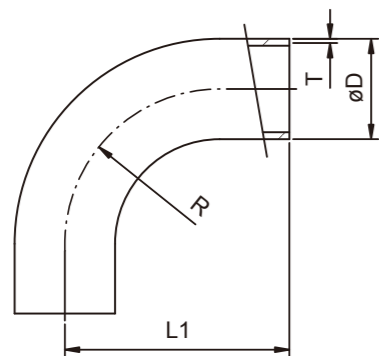


## Pull Tee



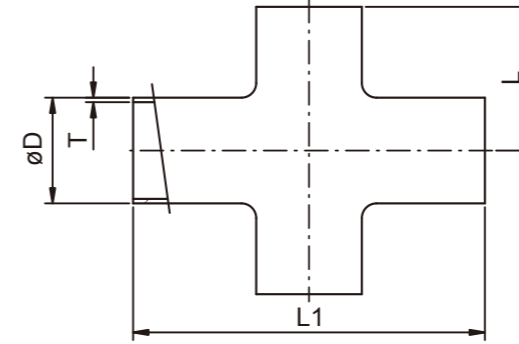
SIZE	øD	H	H1	L1	T
DN20	22	13	47	47	1.5
DN25	28	15.5	50	50	1.5
DN32	34	19	55	55	1.5
DN40	40	22	60	60	1.5
DN50	52	28.5	70	70	1.5
DN65	70	39.5	80	80	2.0
DN80	85	46.5	90	90	2.0
DN100	101.6	56	150	150	2.0
DN100	104	58	100	100	2.0

## 90° Long Bend



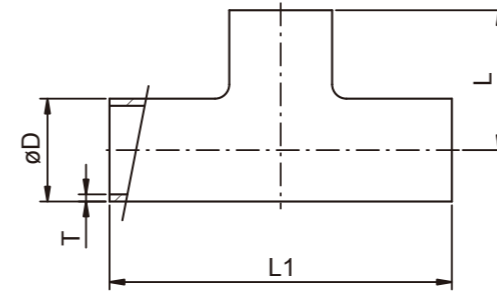
SIZE	D	L1	R	T
DN25	28	65	50	1.5
DN32	34	73	55	1.5
DN40	40	80	60	1.5
DN50	52	92	70	1.5
DN65	70	105	80	2.0
DN80	85	119	90	2.0
DN100	101.6	175	133	2.0
DN100	104	140	100	2.0

## Cross Short Cross



SIZE	D	L	L1	T
1.0"	25.4	65	130	1.65
1.5"	38.1	85	170	1.65
2.0"	50.8	110	220	1.65
2.5"	63.5	135	270	1.65
3.0"	76.2	155	310	1.65
4.0"	101.6	195	390	2.10

## Welding Tee



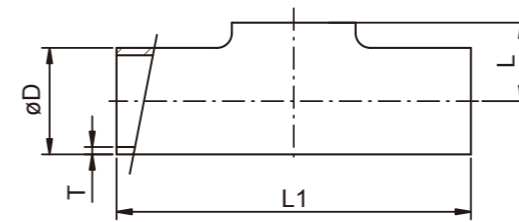
### Welding Tee

SIZE	D	L	L1	T
1.0"	25.4	43.5	87	1.65
1.5"	38.1	63.5	127	1.65
2.0"	50.8	88.5	177	1.65
2.5"	63.5	113.5	227	1.65
3.0"	76.2	133.5	267	1.65
4.0"	101.6	173.5	347	2.10

### Long Tee

SIZE	D	L	L1	T
1.0"	25.4	65	130	1.65
1.5"	38.1	85	170	1.65
2.0"	50.8	110	220	1.65
2.5"	63.5	135	270	1.65
3.0"	76.2	155	310	1.65
4.0"	101.6	195	390	2.10

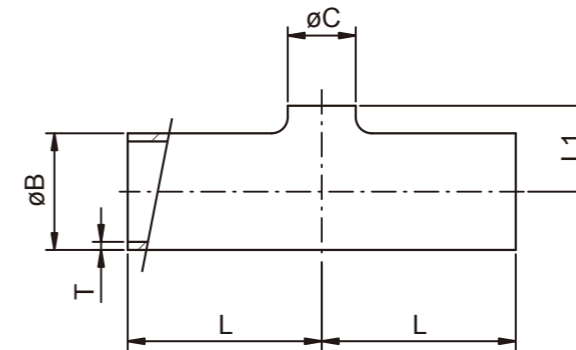
## Pull Tee



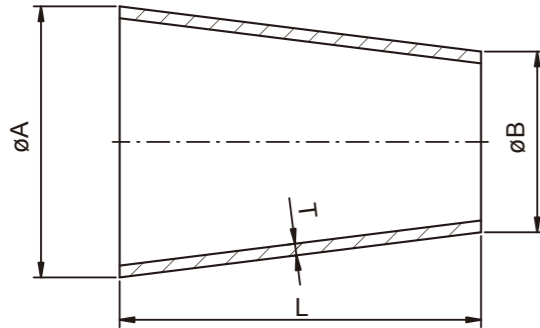
SIZE	D	L	L1	T
1.0"	25.4	14.2	87	1.65
1.5"	38.1	21.6	127	1.65
2.0"	50.8	29.1	177	1.65
2.5"	63.5	35.3	227	1.65
3.0"	76.2	41.4	267	1.65
4.0"	101.6	54.7	347	2.10

## Reducing Tee

### Reducing Tee W/O Straight end

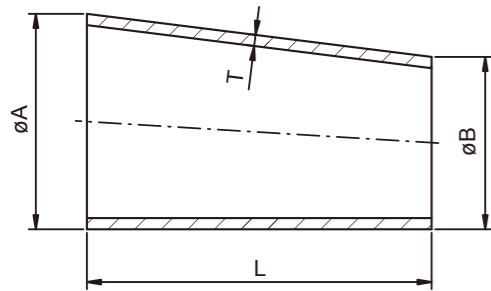


SIZE	B	C	L	L1	T
1.5" x 1.0"	38.1	25.4	63.5	22	1.65
2.0" x 1.0"	50.8	25.4	88.5	29	1.65
2.0" x 1.5"	50.8	38.1	88.5	29	1.65
2.5" x 1.0"	63.5	25.4	113.5	35	1.65
2.5" x 1.5"	63.5	38.1	113.5	35	1.65
2.5" x 2.0"	63.5	50.8	113.5	35	1.65
3.0" x 1.0"	76.2	25.4	132	41	1.65
3.0" x 1.5"	76.2	38.1	129	41	1.65
3.0" x 2.0"	76.2	50.8	112	41	1.65
3.0" x 2.5"	76.2	63.5	112	41	1.65
4.0" x 2.0"	101.6	50.8	173.5	55	2.10
4.0" x 2.5"	101.6	63.5	173.5	55	2.10
4.0" x 3.0"	101.6	76.2	173.5	55	2.10



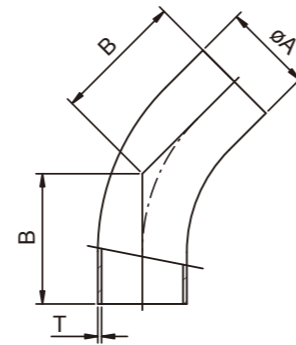
### Concentric Reducer

SIZE	A	B	L	T
1.5" × 1.0"	38.1	25.4	29	1.65
2.0" × 1.0"	50.8	25.4	53	1.65
2.0" × 1.5"	50.8	38.1	41	1.65
2.5" × 1.0"	63.5	25.4	82	1.65
2.5" × 1.5"	63.5	38.1	64	1.65
2.5" × 2.0"	63.5	50.8	40	1.65
3.0" × 1.0"	76.2	25.4	110	1.65
3.0" × 1.5"	76.2	38.1	81	1.65
3.0" × 2.0"	76.2	50.8	55	1.65
3.0" × 2.5"	76.2	63.5	41	1.65
4.0" × 1.5"	101.6	38.1	135	2.10
4.0" × 2.0"	101.6	50.8	106	2.10
4.0" × 2.5"	101.6	63.5	76	2.10
4.0" × 3.0"	101.6	76.2	53	2.10



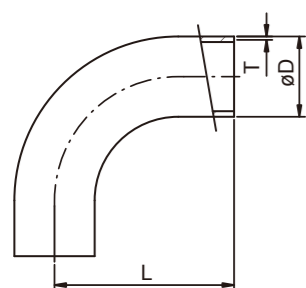
### Eccentric Reducer

SIZE	A	B	L	T
1.5" × 1.0"	38.1	25.4	35	1.65
2.0" × 1.0"	50.8	25.4	54	1.65
2.0" × 1.5"	50.8	38.1	36	1.65
2.5" × 1.0"	63.5	25.4	76	1.65
2.5" × 1.5"	63.5	38.1	66	1.65
2.5" × 2.0"	63.5	50.8	35	1.65
3.0" × 1.0"	76.2	25.4	112	1.65
3.0" × 1.5"	76.2	38.1	78	1.65
3.0" × 2.0"	76.2	50.8	66	1.65
3.0" × 2.5"	76.2	63.5	44	1.65
4.0" × 1.5"	101.6	38.1	122	2.10
4.0" × 2.0"	101.6	50.8	97	2.10
4.0" × 2.5"	101.6	63.5	73	2.10
4.0" × 3.0"	101.6	76.2	77	2.10



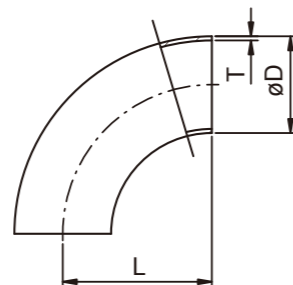
### 45° Long Elbow

SIZE	A	B	T
1.0"	25.4	30.2	1.65
1.5"	38.1	41.3	1.65
2.0"	50.8	58.7	1.65
2.5"	63.5	76.2	1.65
3.0"	76.2	93.7	1.65
4.0"	101.6	122.2	2.10



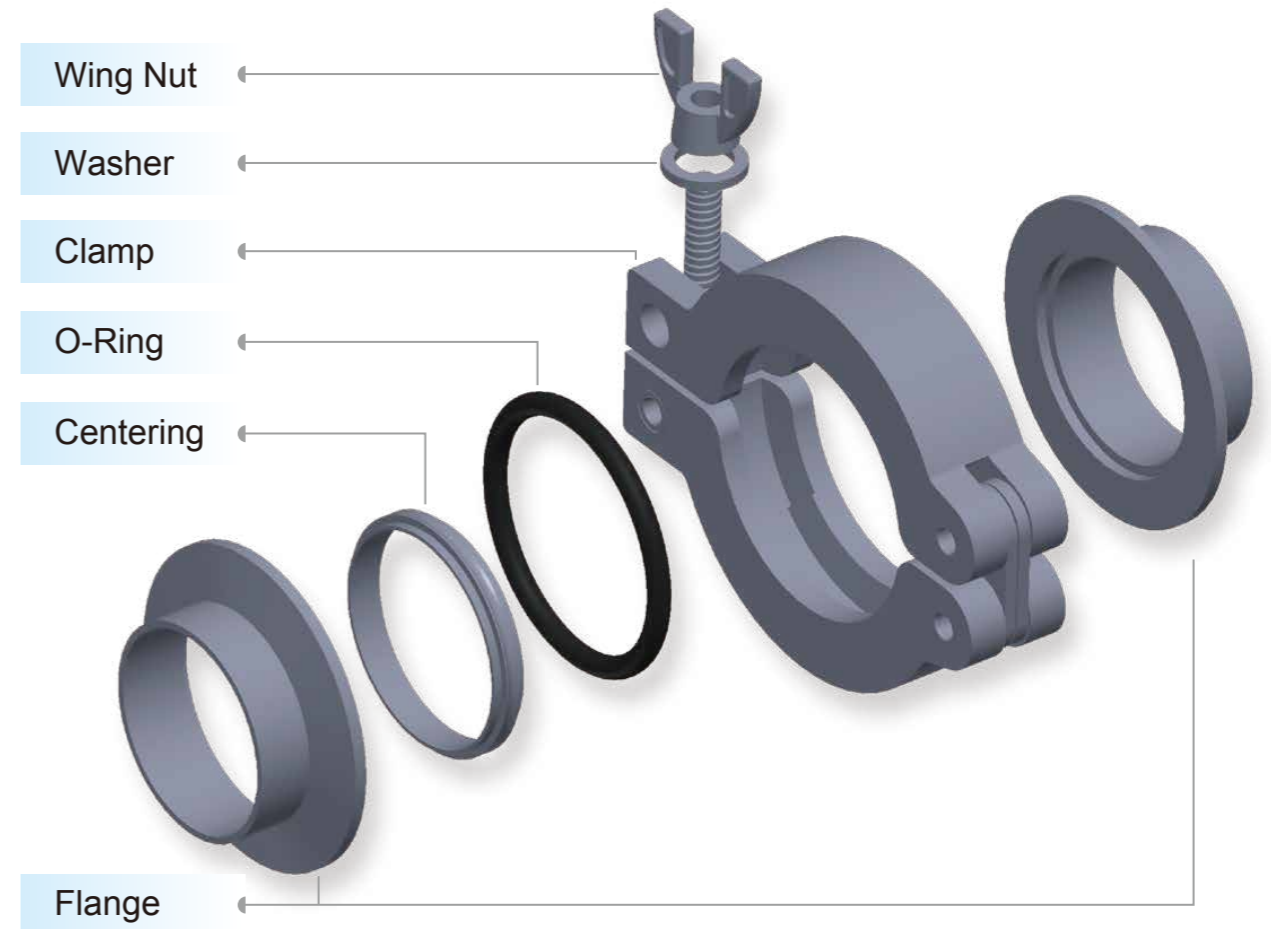
### 90° Long Tube Bend

SIZE	D	L	T
1.0"	25.4	65	1.65
1.5"	38.1	85	1.65
2.0"	50.8	110	1.65
2.5"	63.5	135	1.65
3.0"	76.2	155	1.65
4.0"	101.6	195	2.10



### 90° Short Tube Bend

SIZE	D	L	T
1.0"	25.4	43.5	1.65
1.5"	38.1	63.5	1.65
2.0"	50.8	88.5	1.65
2.5"	63.5	113.5	1.65
3.0"	76.2	133.5	1.65
4.0"	101.6	173.5	2.10



### Characteristic:

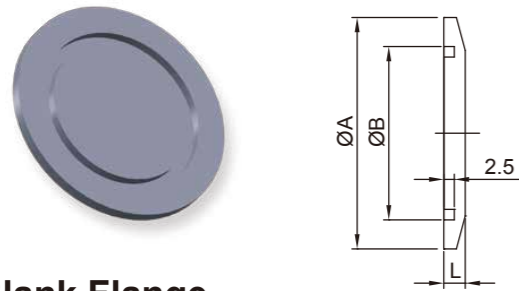
- Easy Assembly and Quick Disassembly manually without tools-KF or NW assembly comprises two flanges, a center-ring, an O-ring and an aluminum clamp or stainless steel clamp with a wingnut fastener for quick and fast connection.
- Uniform Pressure to Effect Vacuum Seal Connection-15° taper surface of KF/NW flange allows uniform pressure to compress an O-ring, which is held in place by metal center-ring, by the clamp to generate a vacuum seal.

### Material and Size

- Flanges, Blanks, Fitting: Material S.S.304
- Clamps: Material Aluminum or S.S. 304
- O-ring : Material Viton
- Sizes: KF10~KF160, JIS Standard: NW10~NW100

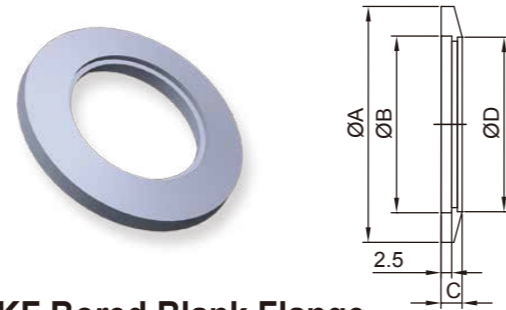
Materials S.S.304, 304L, 316L and Sizes can be customized per customers'designs and requirements.





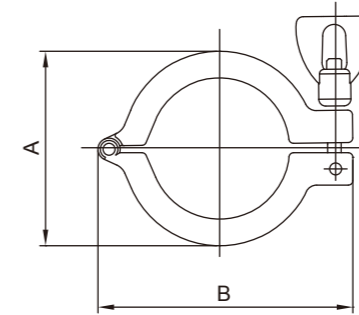
**KF Blank Flange**

SIZE	A	B	L
KF10	30	12.2	5.1
KF16	30	17.2	5.1
KF25	40	26.2	5.1
KF40	55	41.2	5.1
KF50	75	52.2	5.1
KF63	87	70	5.1
KF80	114	83	11.0
KF100	134	102	11.0
KF160	190	153	11.0



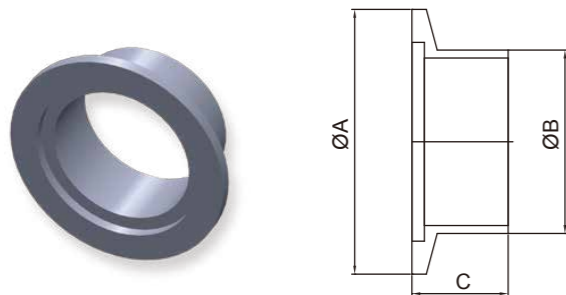
**KF Bored Blank Flange**

SIZE	A	B	C	D
KF10	30	12.2	5.1	12.9
KF16	30	17.2	5.1	19.3
KF25	40	26.2	5.1	25.7
KF40	55	41.2	5.1	38.4
KF50	75	52.2	5.1	51.0
KF63	87	70	5.1	63.7
KF80	114	83	11	76.4
KF100	134	102	11	101.8
KF160	190	153	11	152.9



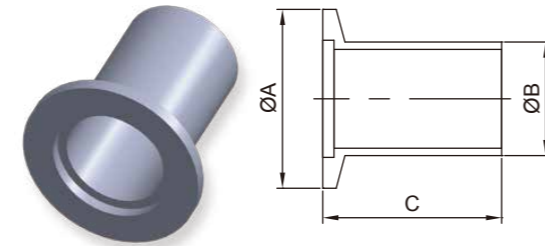
**KF Single Pin Clamp**

SIZE	Material	A	B
KF16	304S.S.	42.5	63
KF25	304S.S.	54	72
KF40	304S.S.	70	90
KF50	304S.S.	90	114



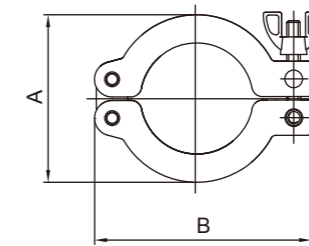
**KF Short Weld Stub Flange**

SIZE	Standard	A	B	C
KF10	U.S.A	30	12.7	12.70
KF16	U.S.A	30	19.1	12.70
KF25	U.S.A	40	25.4	12.70
KF40	U.S.A	55	38.1	19.10
KF50	U.S.A	75	50.8	19.10



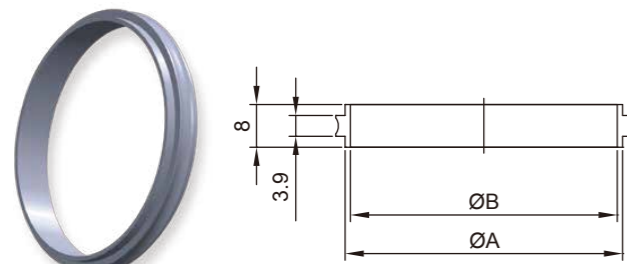
**KF Long Weld Stub Flange**

SIZE	Standard	A	B	C
KF10	U.S.A	30	12.7	40
KF16	U.S.A	30	19.1	40
KF25	U.S.A	40	25.4	40
KF40	U.S.A	55	38.1	40
KF50	U.S.A	75	50.8	40



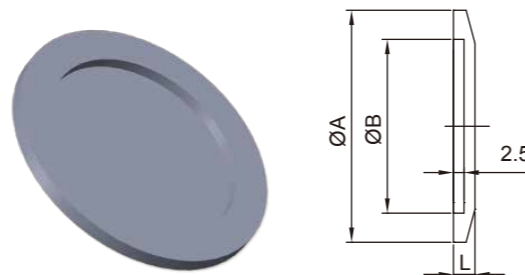
**KF Double Pin Clamp**

SIZE	Material	A	B
KF10	Aluminum+Ni-plated	45	61
KF16	Aluminum+Ni-plated	45	61
KF25	Aluminum+Ni-plated	55	72
KF40	Aluminum+Ni-plated	70	90
KF50	Aluminum+Ni-plated	95	123



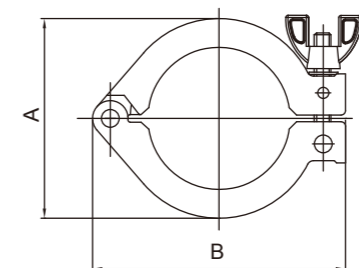
**KF Center Ring**

SIZE	A	B
NW10	12	10
NW16	17	16
NW25	26	25
NW40	41	40
NW50	52	50
NW63	69.6	67.5
NW80	82.5	79.8
NW100	101.6	100



**NW Blank Flange (JIS Type)**

SIZE	A	B	L
NW10	30	12.2	5
NW16	30	17.2	5
NW25	40	26.2	5
NW40	55	41.2	5
NW50	75	52.2	5
NW63	87	70.2	5

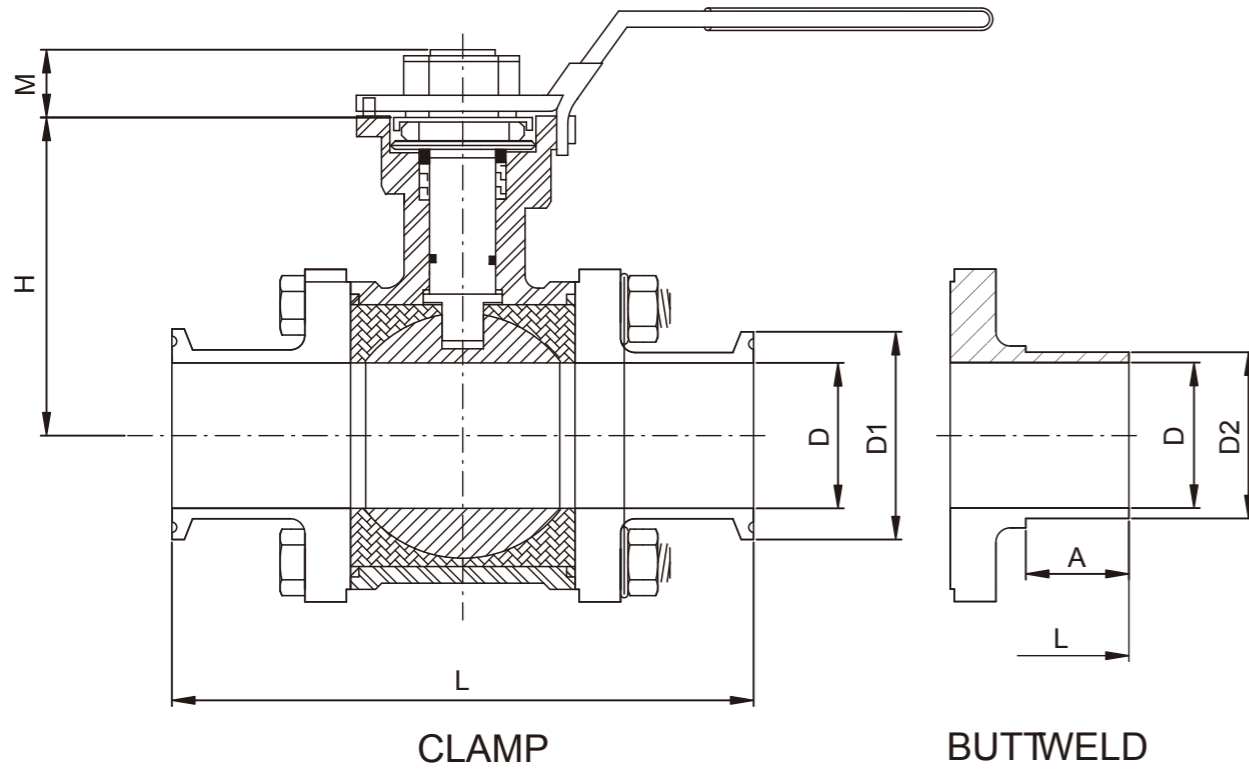
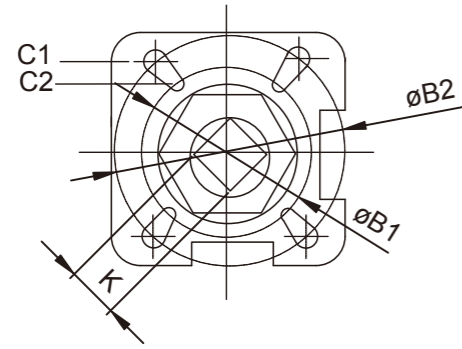


**KF Single Pin Clamp**

SIZE	Material	A	B
KF16	Aluminum	42.5	63
KF25	Aluminum	54	72
KF40	Aluminum	70	90
KF50	Aluminum	90	114



# BALL VALVES



SIZE	ISO 521	D±0.1	L±2.0	H	M±1.0	øB1	øB2	K	D1	D2	A	C1	C2	INCH/LBS
1/2"	F03-F04	9.5	89	37	9	36	42	9	25.4	12.7	18	M5*0.8	M5*0.8	90
3/4"	F03-F04	15.9	101	47	9	36	42	9	25.4	19.1	21	M5*0.8	M5*0.8	100
1"	F04-F05	22.2	114	57.2	1	42	50	11	50.4	25.4	25	M5*0.8	M6*1.0	120
1-1/2"	F05-F07	35	140	78.2	14	50	70	14	50.4	38.2	28	M6.1.0	M8*1.25	240
2"	F05-F07	47.6	156	86.2	14	50	70	14	63.8	50.8	25	M6*1.0	M8*1.25	480
2-1/2"	F07-F10	60.3	197	109.2	17	70	102	17	77.6	63.5	35	M8*1.25	M10*1.5	650
3"	F07-F10	73	229	117.7	17	70	102	17	91	76.2	43	M8*1.25	M10*1.5	1150
4"	F10-F12	97.4	241	141.2	22	102	125	22	119	100.6	37	M10*1.5	M12*1.75	1400



# BALL VALVES

